

\$325,000 - 8418 Mayday Link, Edmonton

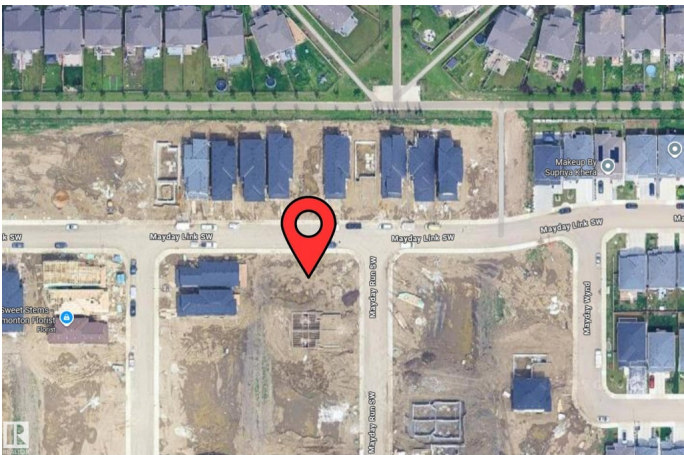
MLS® #E4455861

\$325,000

0 Bedroom, 0.00 Bathroom,
Single Family on 0.00 Acres

The Orchards At Ellerslie, Edmonton, AB

Live the good life in The Orchards at Ellerslie! Build your Dream Home on this lot in one of South Edmonton's most sought-after family friendly communities. The Orchards offers the perfect blend of modern living and natural beauty, with parks, walking trails, and exclusive resident amenities. Located close to schools, shopping, dining, the Airport & all major commuter routes, this community is ideal for families, professionals, and anyone looking to enjoy a vibrant lifestyle in a welcoming neighbourhood. Don't miss your chance to make your mark in The Orchards—a place where comfort, connection, and convenience come together. Visit REALTOR® website for additional information.



Essential Information

MLS® #	E4455861
Price	\$325,000
Bathrooms	0.00
Acres	0.00
Type	Single Family
Sub-Type	Vacant Lot/Land
Status	Active

Community Information

Address	8418 Mayday Link
---------	------------------

Area	Edmonton
Subdivision	The Orchards At Ellerslie
City	Edmonton
County	ALBERTA
Province	AB
Postal Code	T6X 2H6

Exterior

Exterior Features Airport Nearby, Playground Nearby, Schools, Shopping Nearby

Additional Information

Date Listed September 3rd, 2025

Days on Market 2

Zoning Zone 53

DATA IS DEEMED RELIABLE BUT IS NOT GUARANTEED ACCURATE BY THE REALTORS® ASSOCIATION OF EDMONTON. COPYRIGHT 2025 BY THE REALTORS® ASSOCIATION OF EDMONTON. ALL RIGHTS RESERVED. Trademarks are owned or controlled by the Canadian Real Estate Association (CREA) and identify real estate professionals who are members of CREA (REALTOR®, REALTORS®) and/or the quality of services they provide (MLS®, Multiple Listing Service®)

Listing information last updated on September 5th, 2025 at 8:17am MDT