

\$635,500 - 449 Conroy Crescent, Edmonton

MLS® #E4453841

\$635,500

4 Bedroom, 2.50 Bathroom, 1,969 sqft

Single Family on 0.00 Acres

Cavanagh, Edmonton, AB

Welcome to your dream home in Cavanagh! Built in 2022, this beautifully upgraded 2-storey residence offers nearly 2,000 sq. ft. of thoughtfully designed living space. The open-concept main floor showcases a bright and inviting living room, a formal dining area, a modern kitchen with sleek quartz countertops, and a fully equipped spice kitchen – perfect for entertaining and family meals. A convenient half bath and a double attached garage complete this level. Upstairs, you’ll find 4 generously sized bedrooms, including a luxurious primary suite with a walk-in closet and spa-inspired ensuite. A full bathroom, versatile bonus room, and upper-level laundry add to the home’s everyday convenience. A separate side entrance provides exciting potential for future basement development, while the landscaped, fully fenced backyard offers privacy with no rear neighbours and only one side neighbour. ? Don’t miss this incredible opportunity to make Cavanagh your home!

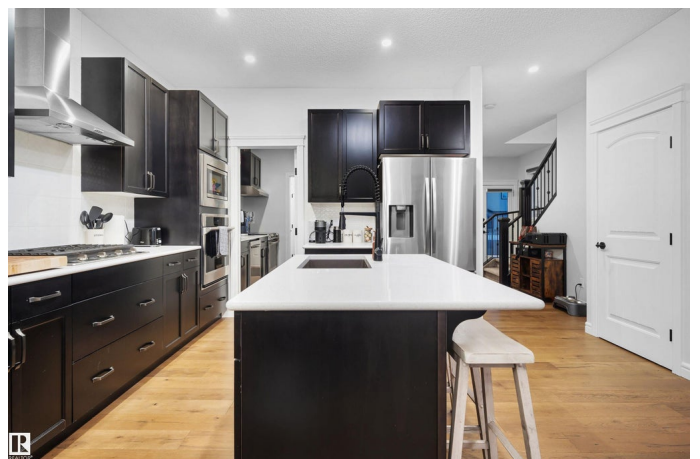
Built in 2022

Essential Information

MLS® # E4453841

Price \$635,500

Bedrooms 4



Bathrooms	2.50
Full Baths	2
Half Baths	1
Square Footage	1,969
Acres	0.00
Year Built	2022
Type	Single Family
Sub-Type	Detached Single Family
Style	2 Storey
Status	Active

Community Information

Address	449 Conroy Crescent
Area	Edmonton
Subdivision	Cavanagh
City	Edmonton
County	ALBERTA
Province	AB
Postal Code	T6W 5A9

Amenities

Amenities	See Remarks
Parking	Double Garage Attached

Interior

Interior Features	ensuite bathroom
Appliances	Dishwasher-Built-In, Dryer, Garage Control, Garage Opener, Oven-Built-In, Oven-Microwave, Refrigerator, Stove-Countertop Gas, Stove-Electric, Washer, Window Coverings
Heating	Forced Air-1, Natural Gas
Stories	2
Has Basement	Yes
Basement	Full, Unfinished

Exterior

Exterior	Concrete, Vinyl
Exterior Features	Airport Nearby, Fenced, Landscaped, Playground Nearby, Schools, Shopping Nearby
Roof	Asphalt Shingles

Construction Concrete, Vinyl
Foundation Concrete Perimeter

Additional Information

Date Listed August 20th, 2025
Days on Market 30
Zoning Zone 55



DATA IS DEEMED RELIABLE BUT IS NOT GUARANTEED ACCURATE BY THE REALTORS® ASSOCIATION OF EDMONTON. COPYRIGHT 2025 BY THE REALTORS® ASSOCIATION OF EDMONTON. ALL RIGHTS RESERVED.Trademarks are owned or controlled by the Canadian Real Estate Association (CREA) and identify real estate professionals who are members of CREA (REALTOR®, REALTORS®) and/or the quality of services they provide (MLS®, Multiple Listing Service®)
Listing information last updated on September 19th, 2025 at 3:48pm MDT