

\$165,000 - 10520 80 Avenue, Edmonton

MLS® #E4452226

\$165,000

1 Bedroom, 1.00 Bathroom, 710 sqft
Condo / Townhouse on 0.00 Acres

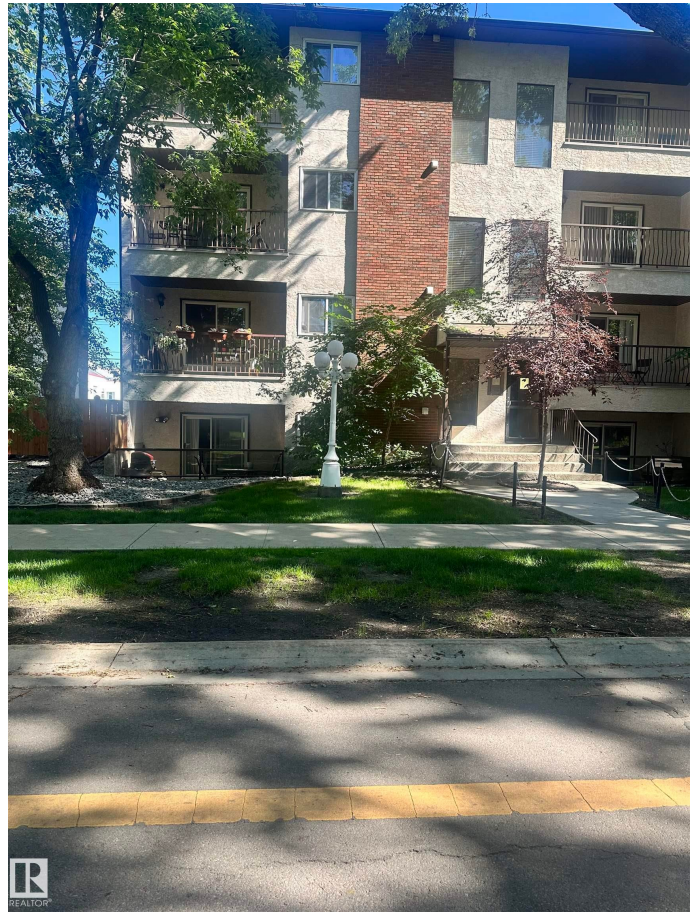
Queen Alexandra, Edmonton, AB

Check out this stylish 710 sq ft one-bedroom condo near Whyte Ave. Perfect for a young couple, university student, or savvy professional, this charming one-bedroom, one-bath unit offers comfort and convenience in one of Edmonton's most vibrant neighborhoods. Just a few blocks from the iconic Whyte Avenue, you'll enjoy a cozy living space complete with a private south facing shaded patio—ideal for relaxing summer evenings. The spacious bedroom includes ample closet space, while in-suite laundry and extra storage add everyday ease and practicality. Live close to all the action—shops, restaurants, the Fringe & other happening events, the University of Alberta, and public transit are all within easy reach.

Built in 1981

Essential Information

MLS® #	E4452226
Price	\$165,000
Bedrooms	1
Bathrooms	1.00
Full Baths	1
Square Footage	710
Acres	0.00
Year Built	1981



Type Condo / Townhouse
Sub-Type Lowrise Apartment
Style Single Level Apartment
Status Active

Community Information

Address 10520 80 Avenue
Area Edmonton
Subdivision Queen Alexandra
City Edmonton
County ALBERTA
Province AB
Postal Code T6E 1V3

Amenities

Amenities On Street Parking, Detector
Parking-Plug-Ins, Patio, Secu
Parking Stall

Interior

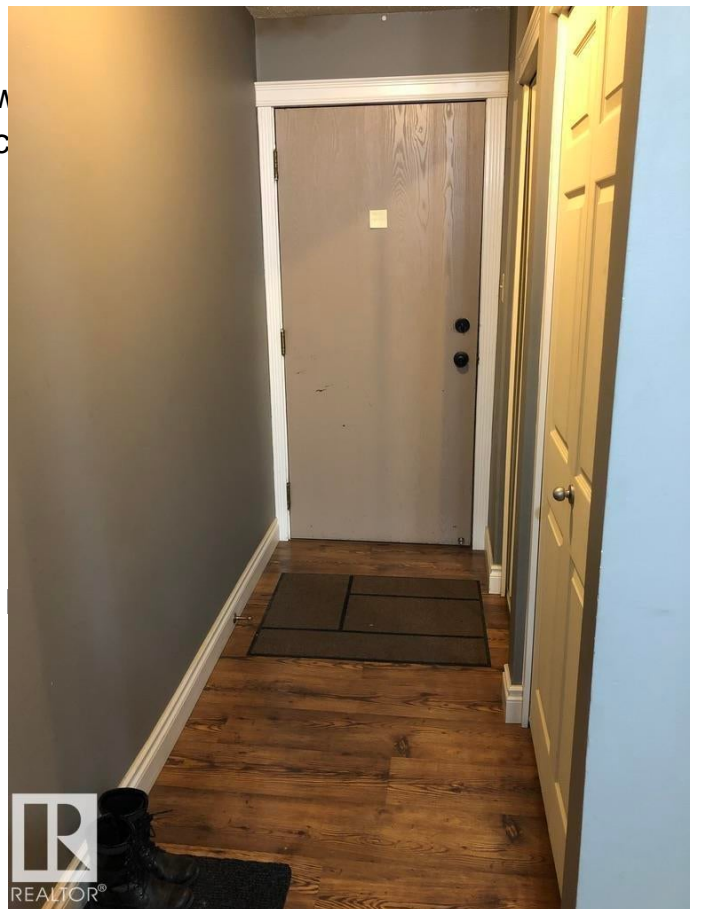
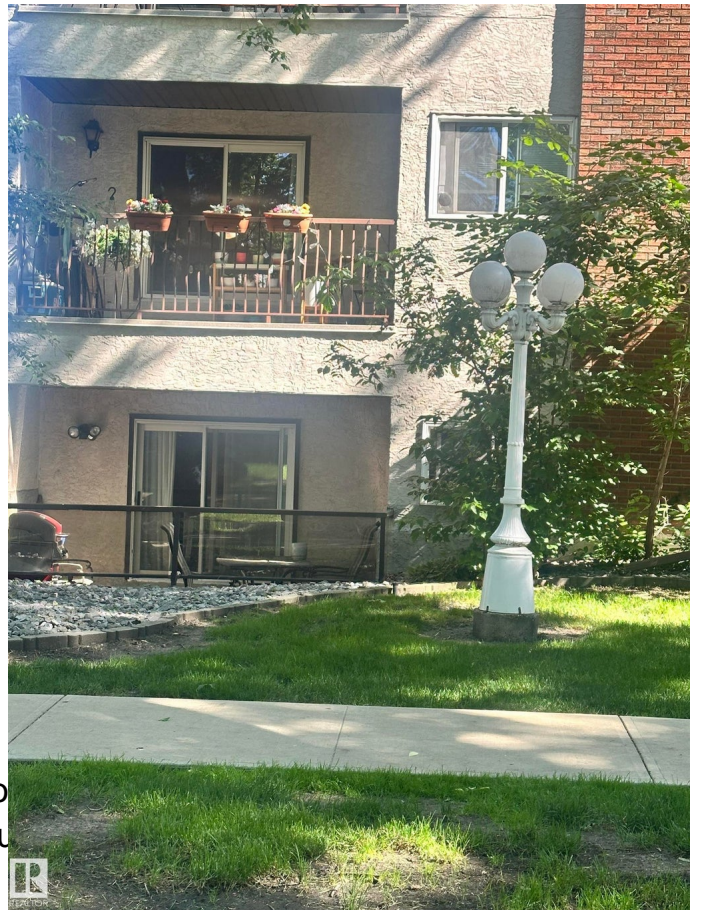
Appliances Dishwasher-Built-In, Microw
Washer/Dryer, Stove-Electric
Heating Hot Water, Natural Gas
of Stories 4
Stories 4
Has Basement Yes
Basement None, No Basement

Exterior

Exterior Wood, Stucco
Exterior Features Back Lane, Paved Lane,
Nearby, Treed Lot
Roof Asphalt Shingles
Construction Wood, Stucco
Foundation Concrete Perimeter

Additional Information

Date Listed August 8th, 2025
Days on Market 9
Zoning Zone 15



Condo Fee

\$386

DATA IS DEEMED RELIABLE BUT IS NOT GUARANTEED ACCURATE BY THE REALTORS® ASSOCIATION OF EDMONTON. COPYRIGHT 2025 BY THE REALTORS® ASSOCIATION OF EDMONTON. ALL RIGHTS RESERVED. Trademarks are owned or controlled by the Canadian Real Estate Association (CREA) and identify real estate professionals who are members of CREA (REALTOR®, REALTORS®) and/or the quality of services they provide (MLS®, Multiple Listing Service®)

Listing information last updated on August 17th, 2025 at 8:47am MDT