

Courtesy Of Peter K Kubiczek Of Keystone Realty

\$424,900 - 314 11220 99 Avenue, Edmonton

MLS® #E4451352

\$424,900

2 Bedroom, 2.00 Bathroom, 1,421 sqft
Condo / Townhouse on 0.00 Acres

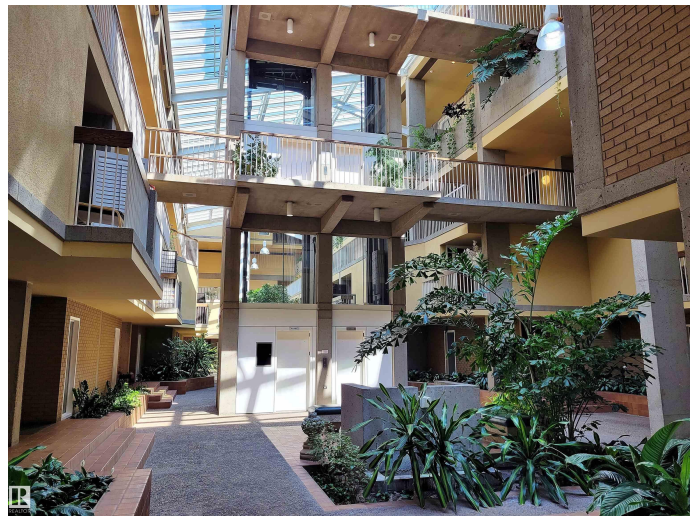
W&hkw&ant&win, Edmonton, AB

Architecturally unique design, concrete and steel-built apartment, integrating nature with live trees and flora throughout the open sunny atrium. Nestled in the heart of downtown, conveniently located to fine dining, river valley trails, and Victoria golf. Professionally designed and renovated, transformed this 1980s apartment to a modern, open concept space, capturing its distinctive style. Inviting foyer opens to the galley kitchen. Glossy white cabinets, stainless steel appliances, sit-down bar/island and canopy hood fan over the stove. Cozy breakfast nook. Dining room has an open ceiling to the second floor. Main floor bedroom has direct access to the 1st balcony. Renovated main bathroom. Glass staircase, black railing will lead you upstairs to a relaxing family room. Full height windows, access to second balcony overlooking the atrium. Wood-burning fireplace, for cozy evenings at home. Primary bedroom is bright, features a walk-in closet renovated ensuite, double sinks and large shower.

Built in 1980

Essential Information

MLS® #	E4451352
Price	\$424,900
Bedrooms	2



Bathrooms	2.00
Full Baths	2
Square Footage	1,421
Acres	0.00
Year Built	1980
Type	Condo / Townhouse
Sub-Type	Lowrise Apartment
Style	Multi Level Apartment
Status	Active

Community Information

Address	314 11220 99 Avenue
Area	Edmonton
Subdivision	Wähkwäntãwin
City	Edmonton
County	ALBERTA
Province	AB
Postal Code	T5K 2K6

Amenities

Amenities	Closet Organizers, Intercom, Secured Parking, Security Door, Storage-Locker Room, Vinyl Windows
Parking Spaces	1
Parking	Stall, Underground

Interior

Interior Features	ensuite bathroom
Appliances	Dishwasher-Built-In, Dryer, Hood Fan, Refrigerator, Stove-Countertop Electric, Washer
Heating	Baseboard, Natural Gas
Fireplace	Yes
Fireplaces	Masonry
# of Stories	4
Stories	2
Has Basement	Yes
Basement	None, No Basement

Exterior

Exterior	Concrete, Brick
----------	-----------------

Exterior Features	Backs Onto Park/Trees, Golf Nearby, Park/Reserve, Playground Nearby, Public Transportation, Shopping Nearby
Roof	Tar & Gravel
Construction	Concrete, Brick
Foundation	Concrete Perimeter

Additional Information

Date Listed	August 6th, 2025
Days on Market	90
Zoning	Zone 12
Condo Fee	\$768

DATA IS DEEMED RELIABLE BUT IS NOT GUARANTEED ACCURATE BY THE REALTORS® ASSOCIATION OF EDMONTON. COPYRIGHT 2025 BY THE REALTORS® ASSOCIATION OF EDMONTON. ALL RIGHTS RESERVED. Trademarks are owned or controlled by the Canadian Real Estate Association (CREA) and identify real estate professionals who are members of CREA (REALTOR®, REALTORS®) and/or the quality of services they provide (MLS®, Multiple Listing Service®)

Listing information last updated on November 4th, 2025 at 4:17pm MST