

\$419,000 - 7214 174 Avenue, Edmonton

MLS® #E4450505

\$419,000

3 Bedroom, 2.50 Bathroom, 1,460 sqft
Single Family on 0.00 Acres

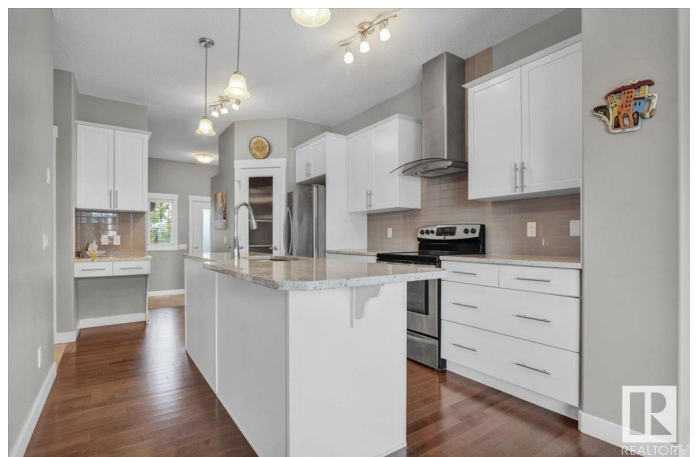
Schonsee, Edmonton, AB

Welcome to your future home in the highly sought-after community of Schonsee! This stunning 1460 sq. ft. half duplex offers an open-concept layout with 9-ft ceilings and rich hardwood floors. The upgraded kitchen features granite countertops, a large island with eating bar, crown-molded cabinetry, pot & pan drawers, a built-in desk, and stainless steel appliances—ideal for both busy mornings and weekend entertaining. A mudroom and half bath add convenience. Upstairs, enjoy 3 cozy bedrooms, including a primary suite with walk-in closet and spa-like 5-piece ensuite. There's also an upper-floor laundry room and custom blinds throughout. Best of all, this home sits on a massive pie-shaped lot backing onto green space, trails, and a future park. Whether you're sipping coffee in the sun or watching your kids play, this home offers the lifestyle you've been dreaming of!

Built in 2015

Essential Information

MLS® #	E4450505
Price	\$419,000
Bedrooms	3
Bathrooms	2.50
Full Baths	2



Half Baths	1
Square Footage	1,460
Acres	0.00
Year Built	2015
Type	Single Family
Sub-Type	Half Duplex
Style	2 Storey
Status	Active

Community Information

Address	7214 174 Avenue
Area	Edmonton
Subdivision	Schonsee
City	Edmonton
County	ALBERTA
Province	AB
Postal Code	T5Z 0L3

Amenities

Amenities	Off Street Parking, Ceiling 9 ft., Closet Organizers, No Animal Home, No Smoking Home, Smart/Program. Thermostat, Vacuum System-Roughed-In
Parking	Front Drive Access, Insulated, Over Sized, Single Garage Attached

Interior

Interior Features	ensuite bathroom
Appliances	Dishwasher-Built-In, Dryer, Garage Opener, Hood Fan, Refrigerator, Stove-Electric, Washer
Heating	Forced Air-1, Natural Gas
Stories	2
Has Basement	Yes
Basement	Full, Unfinished

Exterior

Exterior	Wood, Stone, Vinyl
Exterior Features	Backs Onto Park/Trees, Cul-De-Sac, Fenced, Golf Nearby, Landscaped, Playground Nearby, Public Transportation, Shopping Nearby
Roof	Asphalt Shingles
Construction	Wood, Stone, Vinyl

Foundation Concrete Perimeter

Additional Information

Date Listed July 31st, 2025

Days on Market 41

Zoning Zone 28

DATA IS DEEMED RELIABLE BUT IS NOT GUARANTEED ACCURATE BY THE REALTORS® ASSOCIATION OF EDMONTON. COPYRIGHT 2025 BY THE REALTORS® ASSOCIATION OF EDMONTON. ALL RIGHTS RESERVED. Trademarks are owned or controlled by the Canadian Real Estate Association (CREA) and identify real estate professionals who are members of CREA (REALTOR®, REALTORS®) and/or the quality of services they provide (MLS®, Multiple Listing Service®)

Listing information last updated on September 10th, 2025 at 7:32am MDT