

## \$192,500 - 203 11104 109 Avenue, Edmonton

MLS® #E4450376

**\$192,500**

2 Bedroom, 2.00 Bathroom, 937 sqft

Condo / Townhouse on 0.00 Acres

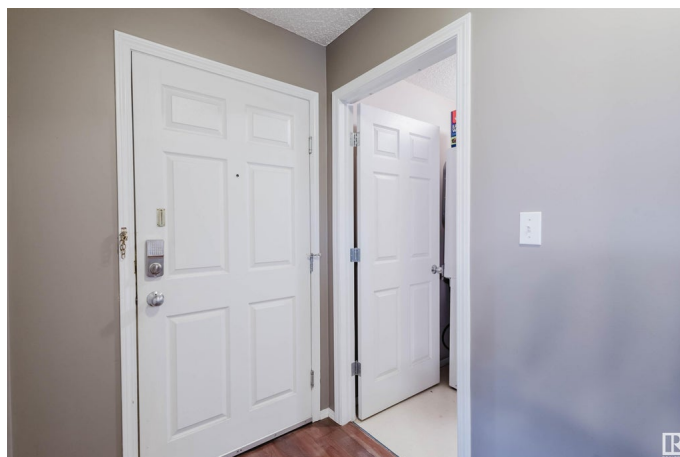
Queen Mary Park, Edmonton, AB

Welcome to this affordable 2-bedroom, 2-bathroom condo offering over 900 sq ft of functional living space in the heart of Queen Mary Park. The kitchen opens onto a spacious living room with large windows that fill the space with natural light. From the living room you can step out to the oversized south facing balcony. The large master bedroom boasts his and her closets and a private ensuite bath. The 2nd bedroom is also spacious and has an adjoining 3 piece bath. This unit also includes a titled parking stall, in-suite laundry, and a quiet, well-maintained building surrounded by green space. Located in a peaceful residential area, yet walking distance to the Royal Alexandra Hospital, public transit, and just minutes to downtown, Kingsway Mall, NAIT and MacEwan University.

Built in 2000

### Essential Information

MLS® #	E4450376
Price	\$192,500
Bedrooms	2
Bathrooms	2.00
Full Baths	2
Square Footage	937
Acres	0.00
Year Built	2000



Type	Condo / Townhouse
Sub-Type	Lowrise Apartment
Style	Single Level Apartment
Status	Active

### Community Information

Address	203 11104 109 Avenue
Area	Edmonton
Subdivision	Queen Mary Park
City	Edmonton
County	ALBERTA
Province	AB
Postal Code	T5H 1E1

### Amenities

Amenities	No Smoking Home, Parking-Visitor, Party Room, See Remarks
Parking	Stall

### Interior

Interior Features	ensuite bathroom
Appliances	Dishwasher-Built-In, Dryer, Hood Fan, Oven-Microwave, Refrigerator, Stove-Electric, Washer, Window Coverings
Heating	Hot Water, Natural Gas
# of Stories	4
Stories	1
Has Basement	Yes
Basement	None, No Basement

### Exterior

Exterior	Wood, Stucco
Exterior Features	Backs Onto Park/Trees, Park/Reserve, Public Transportation, Schools, Shopping Nearby
Roof	Fiberglass
Construction	Wood, Stucco
Foundation	Concrete Perimeter

### Additional Information

Date Listed	July 30th, 2025
Days on Market	2

Zoning	Zone 08
Condo Fee	\$374

DATA IS DEEMED RELIABLE BUT IS NOT GUARANTEED ACCURATE BY THE REALTORS® ASSOCIATION OF EDMONTON. COPYRIGHT 2025 BY THE REALTORS® ASSOCIATION OF EDMONTON. ALL RIGHTS RESERVED. Trademarks are owned or controlled by the Canadian Real Estate Association (CREA) and identify real estate professionals who are members of CREA (REALTOR®, REALTORS®) and/or the quality of services they provide (MLS®, Multiple Listing Service®)

Listing information last updated on August 1st, 2025 at 10:33am MDT