

## \$287,000 - 202 20 St Joseph Street, St. Albert

MLS® #E4448811

**\$287,000**

2 Bedroom, 2.00 Bathroom, 1,207 sqft  
Condo / Townhouse on 0.00 Acres

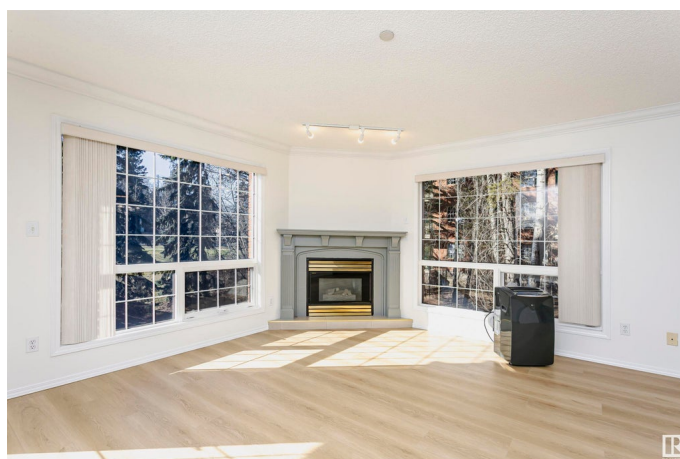
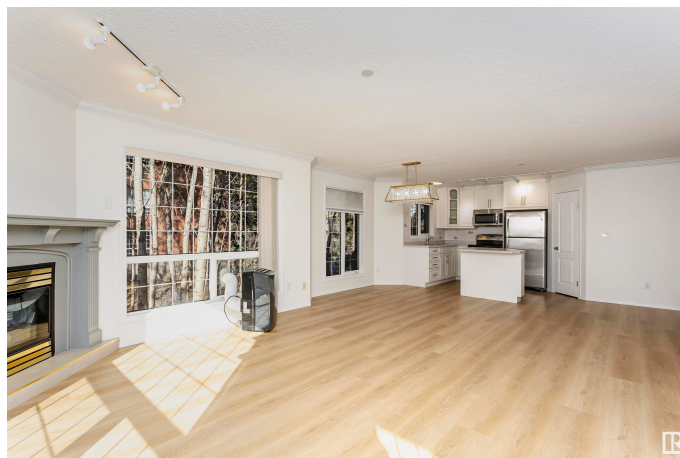
Downtown (St. Albert), St. Albert, AB

This gorgeous condo is situated in the highly desirable 45+ age-restricted Churchill Manor building, located in the heart of Downtown St. Albert. With NEW vinyl plank flooring, light fixtures and freshly painted throughout, this 1207 sqft suite features 2 bedrooms + den and 2 bathrooms, along with a south-facing balcony to soak up the sun. The expansive windows create a bright atmosphere, and being in a corner suite, youâ€™ll enjoy a park-like setting with a coveted view of downtown, just steps away from St. Albert's vibrant shops, restaurants and entertainment options in the downtown core. Enhance your culinary experience by expanding the kitchen island for even more counter space! Spend your Saturdays exploring the St. Albert Farmersâ€™ Market or enjoying the trails along the Sturgeon River. This unit also includes a heated underground parking stall, a personal storage cage and a portable A/C unit for your comfort.

Built in 1995

### Essential Information

MLS® #	E4448811
Price	\$287,000
Bedrooms	2
Bathrooms	2.00



Full Baths	2
Square Footage	1,207
Acres	0.00
Year Built	1995
Type	Condo / Townhouse
Sub-Type	Lowrise Apartment
Style	Single Level Apartment
Status	Active

### Community Information

Address	202 20 St Joseph Street
Area	St. Albert
Subdivision	Downtown (St. Albert)
City	St. Albert
County	ALBERTA
Province	AB
Postal Code	T8N 6M5

### Amenities

Amenities	Deck, Intercom, No Smoking Home, Parking-Visitor, Party Room, Patio, Secured Parking, Security Door, Storage-Locker Room
Parking Spaces	1
Parking	Heated, Underground

### Interior

Interior Features	ensuite bathroom
Appliances	Dishwasher-Built-In, Dryer, Fan-Ceiling, Microwave Hood Fan, Refrigerator, Stove-Electric, Washer
Heating	In Floor Heat System, Natural Gas
Fireplace	Yes
Fireplaces	Mantel
# of Stories	4
Stories	1
Has Basement	Yes
Basement	None, No Basement

### Exterior

Exterior	Wood, Brick
Exterior Features	Backs Onto Park/Trees, Public Swimming Pool, Public Transportation,

	Shopping Nearby, View City, View Downtown
Roof	Tar & Gravel
Construction	Wood, Brick
Foundation	Concrete Perimeter

### **Additional Information**

Date Listed	July 19th, 2025
Days on Market	2
Zoning	Zone 24
Condo Fee	\$808

DATA IS DEEMED RELIABLE BUT IS NOT GUARANTEED ACCURATE BY THE REALTORS® ASSOCIATION OF EDMONTON. COPYRIGHT 2025 BY THE REALTORS® ASSOCIATION OF EDMONTON. ALL RIGHTS RESERVED. Trademarks are owned or controlled by the Canadian Real Estate Association (CREA) and identify real estate professionals who are members of CREA (REALTOR®, REALTORS®) and/or the quality of services they provide (MLS®, Multiple Listing Service®)

Listing information last updated on July 21st, 2025 at 2:47am MDT