

## \$525,000 - 419 Village Grove, Sherwood Park

MLS® #E4448474

**\$525,000**

4 Bedroom, 3.00 Bathroom, 2,263 sqft

Single Family on 0.00 Acres

Village on the Lake, Sherwood Park, AB

A gardener's delight! Ideal for thoughtful stewards of the land. Landscaping follows permaculture principles and nurtures biodiversity, featuring over 100 varieties of perennials, native plants, and mature trees. Backyard borders on a vast green space that will never be built upon and provides a glimpse of the city. Meticulously maintained mature home with bright, open feel. Enter via an oversized double garage or step through double front doors into a roomy tiled foyer with vaulted ceiling. Main floor features a large living room, dining room, kitchen with breakfast nook, family room, a guest bedroom, 3pc bath, and laundry area. Upper level has a spacious master bedroom with fireplace, ensuite, double closets, 2 more bedrooms, another bathroom, and an open office overlooking the foyer. A huge unfinished basement is waiting for you to make it your own. Upgrades include newer roof, vinyl windows, new hot water tank. Walkable amenities and proximity to transit reduce your carbon footprint.

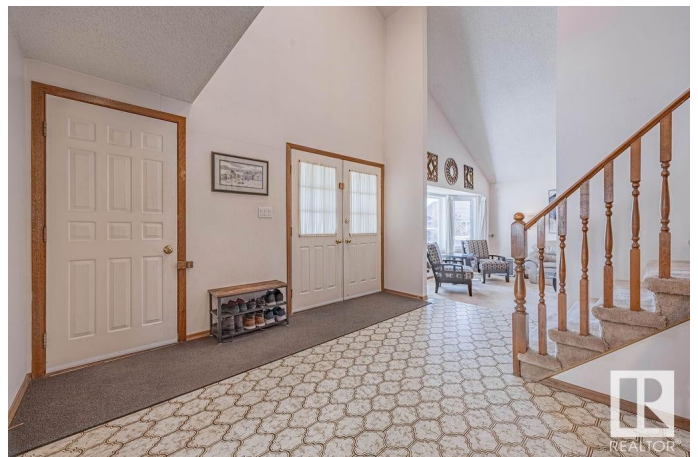
Built in 1981

### Essential Information

MLS® # E4448474

Price \$525,000

Bedrooms 4



Bathrooms	3.00
Full Baths	3
Square Footage	2,263
Acres	0.00
Year Built	1981
Type	Single Family
Sub-Type	Detached Single Family
Style	2 Storey
Status	Active

### **Community Information**

Address	419 Village Grove
Area	Sherwood Park
Subdivision	Village on the Lake
City	Sherwood Park
County	ALBERTA
Province	AB
Postal Code	T8A 4K3

### **Amenities**

Amenities	Hot Water Natural Gas, No Smoking Home
Parking Spaces	4
Parking	Double Garage Attached, Over Sized

### **Interior**

Interior Features	ensuite bathroom
Appliances	Dishwasher-Built-In, Dryer, Garage Control, Garage Opener, Hood Fan, Refrigerator, Stove-Electric, Washer, Window Coverings
Heating	Forced Air-2, Natural Gas
Fireplace	Yes
Fireplaces	Brick Facing
Stories	2
Has Basement	Yes
Basement	Full, Unfinished

### **Exterior**

Exterior	Wood, Brick, Metal
Exterior Features	Cul-De-Sac, Fruit Trees/Shrubs, Golf Nearby, Landscaped, Schools, Shopping Nearby, Treed Lot

Roof	Asphalt Shingles
Construction	Wood, Brick, Metal
Foundation	Concrete Perimeter

**Additional Information**

Date Listed	July 18th, 2025
Days on Market	1
Zoning	Zone 25

DATA IS DEEMED RELIABLE BUT IS NOT GUARANTEED ACCURATE BY THE REALTORS® ASSOCIATION OF EDMONTON. COPYRIGHT 2025 BY THE REALTORS® ASSOCIATION OF EDMONTON. ALL RIGHTS RESERVED.Trademarks are owned or controlled by the Canadian Real Estate Association (CREA) and identify real estate professionals who are members of CREA (REALTOR®, REALTORS®) and/or the quality of services they provide (MLS®, Multiple Listing Service®)

Listing information last updated on July 18th, 2025 at 11:47pm MDT