

\$559,900 - 308 Foxboro Crescent, Sherwood Park

MLS® #E4448357

\$559,900

5 Bedroom, 3.00 Bathroom, 1,548 sqft

Single Family on 0.00 Acres

Foxboro, Sherwood Park, AB

Beautiful family home tucked onto a quiet street in Foxboro, backing directly onto trees and a walking trail. This well-kept 5 bedroom, 3 bathroom home is loaded with updates including central A/C, newer roof (within 5 years), a renovated kitchen, fresh paint, blinds, newer deck, heated and insulated garage, and newer vinyl plank flooring in the basement. Step into a spacious front entry with a large mudroom that flows into a bright and airy main floor featuring vaulted ceilings, large windows, and stunning hardwood floors. The updated kitchen boasts modern cabinetry, stainless steel appliances, and an island overlooking the sunny dining nook with patio doors leading to your private, tree-lined backyard. Two generous bedrooms and a 4pc bath complete the main level. Upstairs, king sized primary suite offers dual closets and a 3pc ensuite. The fully finished basement includes a large rec room, 5th bedroom, 4pc bath, flex room, laundry area, and ample storage. Close to parks, schools, and all amenities.

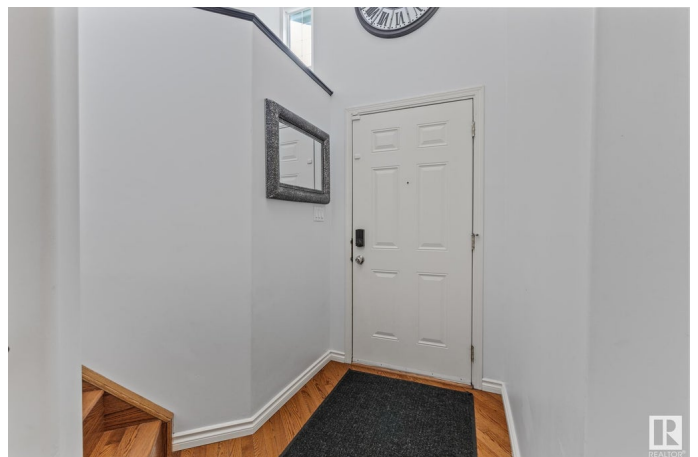
Built in 2004

Essential Information

MLS® # E4448357

Price \$559,900

Bedrooms 5



Bathrooms	3.00
Full Baths	3
Square Footage	1,548
Acres	0.00
Year Built	2004
Type	Single Family
Sub-Type	Detached Single Family
Style	Bi-Level
Status	Active

Community Information

Address	308 Foxboro Crescent
Area	Sherwood Park
Subdivision	Foxboro
City	Sherwood Park
County	ALBERTA
Province	AB
Postal Code	T8A 6M4

Amenities

Amenities	Air Conditioner, Deck, No Smoking Home, Vinyl Windows
Parking	Double Garage Attached

Interior

Interior Features	ensuite bathroom
Appliances	Air Conditioning-Central, Dishwasher - Energy Star, Dryer, Garage Control, Garage Opener, Microwave Hood Fan, Refrigerator, Stove-Electric, Washer, Window Coverings
Heating	Forced Air-1, Natural Gas
Fireplace	Yes
Fireplaces	Insert
Stories	3
Has Basement	Yes
Basement	Full, Finished

Exterior

Exterior	Wood, Vinyl
Exterior Features	Backs Onto Park/Trees, Corner Lot, Landscaped, Public Transportation, Schools, Shopping Nearby, Treed Lot

Roof	Asphalt Shingles
Construction	Wood, Vinyl
Foundation	Concrete Perimeter

Additional Information

Date Listed	July 17th, 2025
Days on Market	2
Zoning	Zone 25

DATA IS DEEMED RELIABLE BUT IS NOT GUARANTEED ACCURATE BY THE REALTORS® ASSOCIATION OF EDMONTON. COPYRIGHT 2025 BY THE REALTORS® ASSOCIATION OF EDMONTON. ALL RIGHTS RESERVED.Trademarks are owned or controlled by the Canadian Real Estate Association (CREA) and identify real estate professionals who are members of CREA (REALTOR®, REALTORS®) and/or the quality of services they provide (MLS®, Multiple Listing Service®)

Listing information last updated on July 18th, 2025 at 11:47pm MDT