

\$425,000 - 44 Garden Valley Drive, Stony Plain

MLS® #E4447986

\$425,000

5 Bedroom, 2.00 Bathroom, 1,058 sqft

Single Family on 0.00 Acres

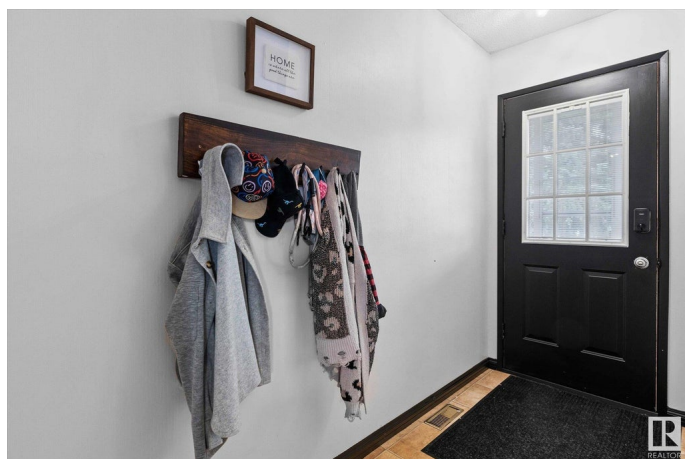
Southridge_STPL, Stony Plain, AB

Welcome to this beautifully updated 5-bedroom bungalow offering the perfect blend of comfort and functionality. Situated on a large lot, this home features a double detached garage, a huge yard perfect for kids, pets, or entertaining, and a sprawling deck ideal for summer BBQs or quiet mornings outdoors. Inside, you'll love the bright and open layout, with renovated bathrooms that bring a modern touch to this family-friendly home. Whether you're hosting guests or enjoying a quiet evening in, this home offers space, style, and flexibility for every lifestyle. Don't miss your chance to own this move-in ready gem!

Built in 1978

Essential Information

MLS® #	E4447986
Price	\$425,000
Bedrooms	5
Bathrooms	2.00
Full Baths	2
Square Footage	1,058
Acres	0.00
Year Built	1978
Type	Single Family
Sub-Type	Detached Single Family



Style	Bungalow
Status	Active

Community Information

Address	44 Garden Valley Drive
Area	Stony Plain
Subdivision	Southridge_STPL
City	Stony Plain
County	ALBERTA
Province	AB
Postal Code	T7Z 1H4

Amenities

Amenities	See Remarks
Parking	Double Garage Detached

Interior

Appliances	Dishwasher-Built-In, Dryer, Freezer, Garage Control, Garage Opener, Refrigerator, Storage Shed, Stove-Electric, Washer
Heating	Forced Air-1, Natural Gas
Stories	2
Has Basement	Yes
Basement	Full, Finished

Exterior

Exterior	Wood, Stucco, Vinyl
Exterior Features	Fenced, Flat Site, Golf Nearby, Landscaped, Schools, See Remarks
Roof	Asphalt Shingles
Construction	Wood, Stucco, Vinyl
Foundation	Concrete Perimeter

Additional Information

Date Listed	July 16th, 2025
Days on Market	4
Zoning	Zone 91

DATA IS DEEMED RELIABLE BUT IS NOT GUARANTEED ACCURATE BY THE REALTORS® ASSOCIATION OF EDMONTON. COPYRIGHT 2025 BY THE REALTORS® ASSOCIATION OF EDMONTON. ALL RIGHTS RESERVED. Trademarks are owned or controlled by the Canadian Real Estate Association (CREA) and identify real estate professionals who are members of CREA (REALTOR®, REALTORS®) and/or the quality of services they provide (MLS®, Multiple Listing Service®)

Listing information last updated on July 19th, 2025 at 10:47pm MDT