

\$350,000 - 1920 152 Avenue, Edmonton

MLS® #E4447405

\$350,000

4 Bedroom, 3.00 Bathroom, 1,214 sqft

Single Family on 0.00 Acres

Fraser, Edmonton, AB

FLIPPERS & RENOVATORS WANTED!!!

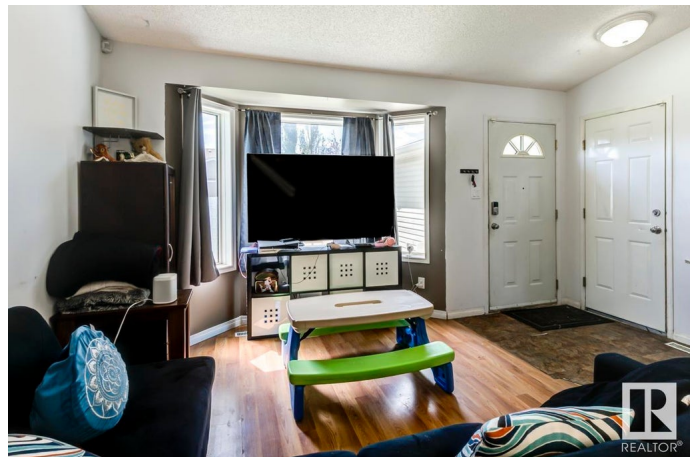
Spacious 4-bed, 3-bath split-level ideal for renovators or sweat equity handymen.

Vaulted ceilings on the main, Kitchen has sliding patio doors to a private sun deck and fully fenced yard. Upstairs offers 3 generous bedrooms, a 4-piece bath, and primary with walk-in closet and 3-piece ensuite. Third level includes a cozy fireplace in the family room, large 4th bedroom, 3-piece bath/laundry combo. Lower level has a full crawl space with tons of storage and ready for your finishing touches. Great layout with loads of potential in a quiet quality neighborhood!!

Built in 1993

Essential Information

| | |
|----------------|------------------------|
| MLS® # | E4447405 |
| Price | \$350,000 |
| Bedrooms | 4 |
| Bathrooms | 3.00 |
| Full Baths | 3 |
| Square Footage | 1,214 |
| Acres | 0.00 |
| Year Built | 1993 |
| Type | Single Family |
| Sub-Type | Detached Single Family |
| Style | 4 Level Split |



Status Active

Community Information

Address 1920 152 Avenue
Area Edmonton
Subdivision Fraser
City Edmonton
County ALBERTA
Province AB
Postal Code T5R 2R7

Amenities

Amenities Deck
Parking Spaces 4
Parking Double Garage Attached

Interior

Interior Features ensuite bathroom
Appliances Dishwasher-Built-In, Dryer, Garage Control, Garage Opener, Refrigerator, Stove-Electric, Washer
Heating Forced Air-1, Natural Gas
Stories 3
Has Basement Yes
Basement Full, Finished

Exterior

Exterior Wood, Vinyl
Exterior Features Golf Nearby, Landscaped, Park/Reserve, Picnic Area, Playground Nearby, Public Swimming Pool, Public Transportation, Schools, Shopping Nearby
Roof Asphalt Shingles
Construction Wood, Vinyl
Foundation Concrete Perimeter

Additional Information

Date Listed July 11th, 2025
Days on Market 1
Zoning Zone 35

DATA IS DEEMED RELIABLE BUT IS NOT GUARANTEED ACCURATE BY THE REALTORS® ASSOCIATION OF EDMONTON. COPYRIGHT 2025 BY THE REALTORS® ASSOCIATION OF EDMONTON. ALL RIGHTS

RESERVED.Trademarks are owned or controlled by the Canadian Real Estate Association (CREA) and identify real estate professionals who are members of CREA (REALTOR®, REALTORS®) and/or the quality of services they provide (MLS®, Multiple Listing Service®)

Listing information last updated on July 12th, 2025 at 10:02am MDT