

\$458,800 - 14624 60 Street, Edmonton

MLS® #E4447225

\$458,800

5 Bedroom, 2.00 Bathroom, 1,083 sqft
Single Family on 0.00 Acres

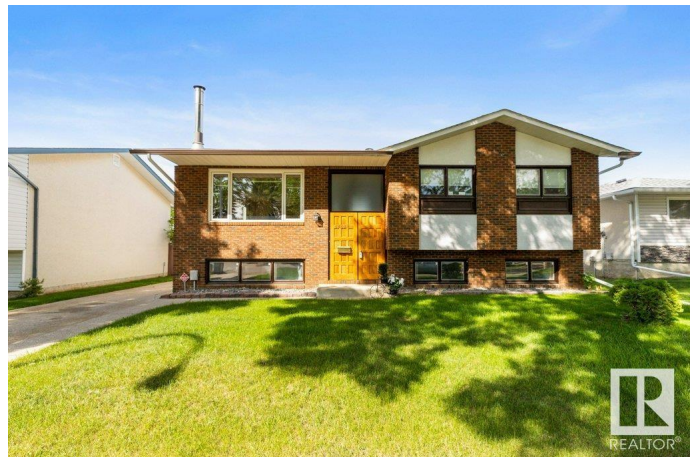
McLeod, Edmonton, AB

Supreme location in McLeod on a cull-d-sac facing a quiet island park! This 3+2 bedroom bi-level home has a modern kitchen open to the living & dining room that overlooks the quiet street. The recently updated kitchen has updated stainless steel appliances & tiled floor. The 3 main floor bedrooms are all well sized. The main floor has hardwood flooring throughout including the bedrooms & there is no carpet in this home! There are two renovated matching 4-piece baths, 1 up and 1 down. The lower level offers a full 2nd kitchen complete with full sized fridge, stove & dishwasher along with a living & dining space. There are two large bedrooms & the laundry mechanical area. The lower level can be directly accessed from outside. The large lot is fully fenced & has a massive deck off the back an ideal spot for the sun worshippers, the oversized double detached garage is finished & heated. Other recent improvements include, shingles, furnace, electrical panel, paint & more! Ideal location close to it all!

Built in 1969

Essential Information

MLS® #	E4447225
Price	\$458,800
Bedrooms	5



Bathrooms	2.00
Full Baths	2
Square Footage	1,083
Acres	0.00
Year Built	1969
Type	Single Family
Sub-Type	Detached Single Family
Style	Bi-Level
Status	Active

Community Information

Address	14624 60 Street
Area	Edmonton
Subdivision	Mcleod
City	Edmonton
County	ALBERTA
Province	AB
Postal Code	T5A 1Z4

Amenities

Amenities	Deck, Walkout Basement
Parking Spaces	4
Parking	Double Garage Detached, Heated, Over Sized

Interior

Appliances	Dryer, Washer, Window Coverings, Refrigerators-Two, Stoves-Two, Dishwasher-Two, Microwave Hood Fan-Two
Heating	Forced Air-1, Natural Gas
Fireplace	Yes
Fireplaces	Stone Facing
Stories	2
Has Basement	Yes
Basement	Full, Finished

Exterior

Exterior	Wood, Brick, Stucco
Exterior Features	Cul-De-Sac, Fenced, Park/Reserve, Playground Nearby, Public Transportation, Schools, Shopping Nearby
Roof	Asphalt Shingles

Construction	Wood, Brick, Stucco
Foundation	Concrete Perimeter

School Information

Elementary	McLeod, St. Dominic
Middle	Steele Heights, JJ Bowlen
High	ME Lazerte, Arch. O'Leary

Additional Information

Date Listed	July 11th, 2025
Days on Market	1
Zoning	Zone 02

DATA IS DEEMED RELIABLE BUT IS NOT GUARANTEED ACCURATE BY THE REALTORS® ASSOCIATION OF EDMONTON. COPYRIGHT 2025 BY THE REALTORS® ASSOCIATION OF EDMONTON. ALL RIGHTS RESERVED.Trademarks are owned or controlled by the Canadian Real Estate Association (CREA) and identify real estate professionals who are members of CREA (REALTOR®, REALTORS®) and/or the quality of services they provide (MLS®, Multiple Listing Service®)

Listing information last updated on July 12th, 2025 at 2:02pm MDT