

\$499,900 - 146 Chestermere Crescent, Sherwood Park

MLS® #E4446714

\$499,900

3 Bedroom, 2.50 Bathroom, 1,490 sqft

Single Family on 0.00 Acres

Lakeland Ridge, Sherwood Park, AB

Welcome to Lakeland Ridge! This immaculate 3 bed, 2.5 bath, 2-story home is nestled on a quiet crescent. As you enter, the entry with its vaulted ceilings, light floods the space. The open concept main floor boasts laminate flooring throughout, fostering a cohesive space for entertaining. The living room features a cozy corner gas fireplace and a large window that offers views of the lovely backyard. The kitchen is equipped with stainless steel appliances, a corner pantry, and an island with bar seating. The dining area has patio doors that lead to the deck. The main floor also includes a laundry room and a half bathroom. The primary bedroom upstairs is spacious with ample closets and a 4pc ensuite. Two additional good-sized bedrooms and another 4pc bath complete the upstairs. The unfinished basement is well-laid out, an opportunity to create additional space. The yard is fully fenced and features a spacious deck, ideal for enjoying evenings. Close to parks, bike trails, shopping, school and so much more.

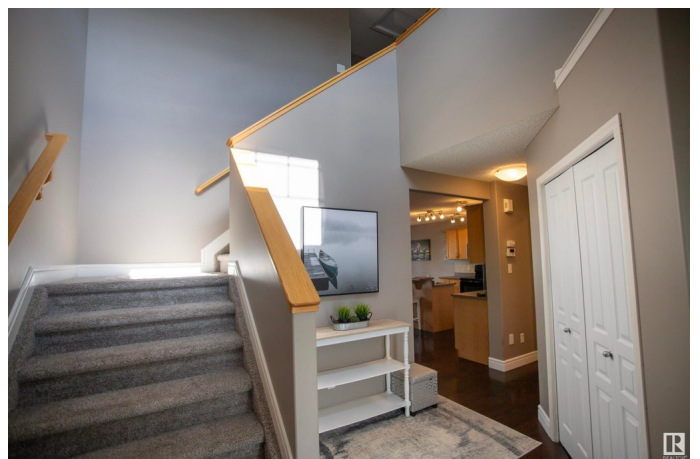
Built in 2006

Essential Information

MLS® # E4446714

Price \$499,900

Bedrooms 3



Bathrooms	2.50
Full Baths	2
Half Baths	1
Square Footage	1,490
Acres	0.00
Year Built	2006
Type	Single Family
Sub-Type	Detached Single Family
Style	2 Storey
Status	Active

Community Information

Address	146 Chestermere Crescent
Area	Sherwood Park
Subdivision	Lakeland Ridge
City	Sherwood Park
County	ALBERTA
Province	AB
Postal Code	T8N 2W5

Amenities

Amenities	Off Street Parking, Hot Water Natural Gas, Vinyl Windows
Parking Spaces	4
Parking	Double Garage Attached

Interior

Interior Features	ensuite bathroom
Appliances	Dishwasher-Built-In, Dryer, Microwave Hood Fan, Refrigerator, Stove-Electric, Washer, Window Coverings, TV Wall Mount
Heating	Forced Air-1, Natural Gas
Stories	2
Has Basement	Yes
Basement	Full, Unfinished

Exterior

Exterior	Wood, Vinyl
Exterior Features	Fenced, Landscaped, No Back Lane, Playground Nearby, Public Transportation, Schools, Shopping Nearby
Roof	Asphalt Shingles

Construction	Wood, Vinyl
Foundation	Concrete Perimeter

School Information

Elementary	Lakeland Ridge
Middle	Lakeland Ridge
High	Salisbury Composite

Additional Information

Date Listed	July 9th, 2025
Days on Market	10
Zoning	Zone 25

DATA IS DEEMED RELIABLE BUT IS NOT GUARANTEED ACCURATE BY THE REALTORS® ASSOCIATION OF EDMONTON. COPYRIGHT 2025 BY THE REALTORS® ASSOCIATION OF EDMONTON. ALL RIGHTS RESERVED.Trademarks are owned or controlled by the Canadian Real Estate Association (CREA) and identify real estate professionals who are members of CREA (REALTOR®, REALTORS®) and/or the quality of services they provide (MLS®, Multiple Listing Service®)

Listing information last updated on July 19th, 2025 at 7:47am MDT