

\$574,900 - 16311 135 Street, Edmonton

MLS® #E4445133

\$574,900

4 Bedroom, 3.50 Bathroom, 1,816 sqft

Single Family on 0.00 Acres

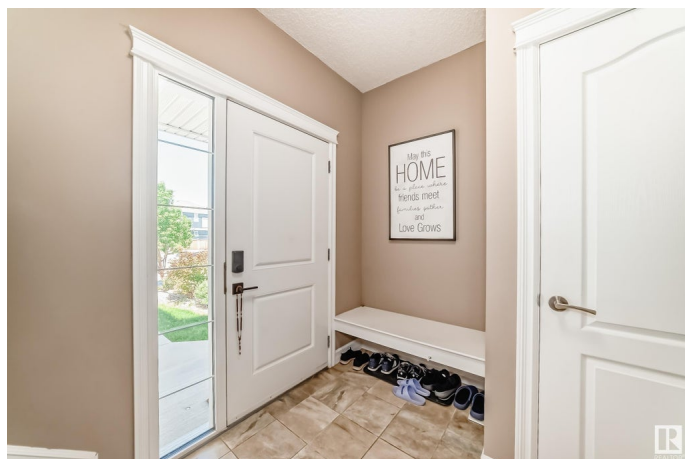
Carlton, Edmonton, AB

A RARE FIND IN CARLTON! Tucked in a quiet cul-de-sac on a large pie lot, this AIR-CONDITIONED 2-STOREY GEM offers 4 beds, 3.5 baths & over 1800+ SQ FT of living space—perfect for families. The open main floor features MODERN TONES, HARDWOOD FLOORS, a cozy GAS FIREPLACE, and a kitchen with GRANITE COUNTERS, SS APPLIANCES, TILE BACKSPLASH, CORNER PANTRY, and ISLAND—ideal for entertaining. Upstairs has a BONUS ROOM, 3 bedrooms, a 4-pc bath, and a PRIMARY SUITE with WALK-IN CLOSET & 5-PC ENSUITE. The FINISHED BASEMENT adds a rec room, 4th bed, and 3-pc bath. Enjoy the FENCED PIE LOT, PRIVATE DECK, SOLAR PANELS, HOT WATER ON DEMAND, and DBL ATTACHED GARAGE. Close to schools, parks, trails, shopping & the HENDAY!

Built in 2014

Essential Information

| | |
|------------|-----------|
| MLS® # | E4445133 |
| Price | \$574,900 |
| Bedrooms | 4 |
| Bathrooms | 3.50 |
| Full Baths | 3 |
| Half Baths | 1 |



| | |
|----------------|------------------------|
| Square Footage | 1,816 |
| Acres | 0.00 |
| Year Built | 2014 |
| Type | Single Family |
| Sub-Type | Detached Single Family |
| Style | 2 Storey |
| Status | Active |

Community Information

| | |
|-------------|------------------|
| Address | 16311 135 Street |
| Area | Edmonton |
| Subdivision | Carlton |
| City | Edmonton |
| County | ALBERTA |
| Province | AB |
| Postal Code | T6V 0J9 |

Amenities

| | |
|----------------|------------------------------------|
| Amenities | Air Conditioner, Deck, See Remarks |
| Parking Spaces | 4 |
| Parking | Double Garage Attached |

Interior

| | |
|-------------------|--|
| Interior Features | ensuite bathroom |
| Appliances | Dryer, Garage Control, Garage Opener, Hood Fan, Oven-Microwave, Refrigerator, Stove-Electric, Washer, Window Coverings |
| Heating | Forced Air-2, Natural Gas |
| Stories | 3 |
| Has Basement | Yes |
| Basement | Full, Finished |

Exterior

| | |
|-------------------|--|
| Exterior | Wood, Vinyl |
| Exterior Features | Cul-De-Sac, Fenced, Flat Site, Landscaped, No Back Lane, Playground Nearby, Public Transportation, Schools, Shopping Nearby, See Remarks |
| Roof | Asphalt Shingles |
| Construction | Wood, Vinyl |
| Foundation | Concrete Perimeter |

Additional Information

Date Listed June 30th, 2025

Days on Market 4

Zoning Zone 27

DATA IS DEEMED RELIABLE BUT IS NOT GUARANTEED ACCURATE BY THE REALTORS® ASSOCIATION OF EDMONTON. COPYRIGHT 2025 BY THE REALTORS® ASSOCIATION OF EDMONTON. ALL RIGHTS RESERVED. Trademarks are owned or controlled by the Canadian Real Estate Association (CREA) and identify real estate professionals who are members of CREA (REALTOR®, REALTORS®) and/or the quality of services they provide (MLS®, Multiple Listing Service®)

Listing information last updated on July 4th, 2025 at 4:03pm MDT