

Courtesy Of Deep Nirwan Of Exp Realty

# \$709,000 - 119 Lilac Close, Leduc

MLS® #E4444232

**\$709,000**

4 Bedroom, 3.00 Bathroom, 2,281 sqft

Single Family on 0.00 Acres

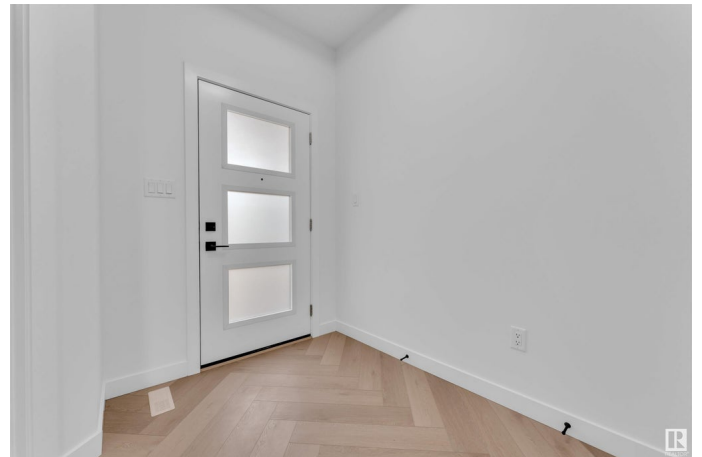
Woodbend, Leduc, AB

Double Garage Detached Home located in a peaceful community while being conveniently close to all amenities. Main floor with Open to above Living area with fireplace & stunning feature wall. Main floor bedroom with closet and full bath. BEAUTIFUL extended kitchen with Centre island. Spice Kitchen with lot of cabinets. Dining nook with access to backyard . Oak staircase leads to spacious bonus room. Huge Primary bedroom with 5pc fully custom ensuite & W/I closet. Two more bedrooms with common bathroom. Laundry on 2nd floor with sink. Unfinished basement waiting for your personal finishes.

Built in 2025

## Essential Information

MLS® #	E4444232
Price	\$709,000
Bedrooms	4
Bathrooms	3.00
Full Baths	3
Square Footage	2,281
Acres	0.00
Year Built	2025
Type	Single Family
Sub-Type	Detached Single Family
Style	2 Storey



Status Active

### Community Information

Address 119 Lilac Close  
Area Leduc  
Subdivision Woodbend  
City Leduc  
County ALBERTA  
Province AB  
Postal Code T9E 1R3

### Amenities

Amenities Ceiling 9 ft., No Animal Home, No Smoking Home, 9 ft. Basement Ceiling  
Parking Double Garage Attached

### Interior

Interior Features ensuite bathroom  
Appliances None  
Heating Forced Air-1, Natural Gas  
Stories 2  
Has Basement Yes  
Basement Full, Unfinished

### Exterior

Exterior Wood, Vinyl  
Exterior Features Airport Nearby, Cul-De-Sac, Schools, Shopping Nearby  
Roof Asphalt Shingles  
Construction Wood, Vinyl  
Foundation Concrete Perimeter

### Additional Information

Date Listed June 25th, 2025  
Days on Market 81  
Zoning Zone 81

DATA IS DEEMED RELIABLE BUT IS NOT GUARANTEED ACCURATE BY THE REALTORS® ASSOCIATION OF EDMONTON. COPYRIGHT 2025 BY THE REALTORS® ASSOCIATION OF EDMONTON. ALL RIGHTS RESERVED. Trademarks are owned or controlled by the Canadian Real Estate Association (CREA) and identify real estate professionals who are members of CREA (REALTOR®, REALTORS®) and/or the quality of services they provide (MLS®, Multiple Listing Service®)

Listing information last updated on September 14th, 2025 at 2:32am MDT