

## \$524,900 - 63 Glenwood Crescent, Stony Plain

MLS® #E4442879

**\$524,900**

4 Bedroom, 3.00 Bathroom, 1,241 sqft

Single Family on 0.00 Acres

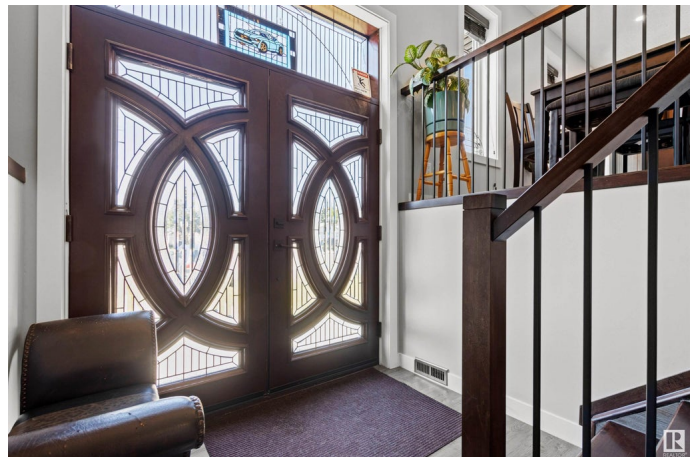
Glens The, Stony Plain, AB

**UPGRADED BI-LEVEL IN THE GLENS** This beautifully updated home is located in a quiet cul-de-sac on a large pie-shaped lot, offering both space and privacy. The main floor features a bright open concept living area, a renovated kitchen with granite countertops, stylish backsplash, upgraded flooring, fireplace, and modern lighting throughout. The primary bedroom includes a 3-piece ensuite, plus there's an additional 4-piece bathroom on the main level. The fully finished basement includes a spacious second living room with a pool table, utility room, and two oversized bedrooms—perfect for guests or family. Built for comfort and efficiency, this home boasts 2 x 8 main floor walls, 2 x 12 basement walls, and a high-efficiency furnace. Heated garage, Central Air conditioning. Close to schools, parks, and shopping, this is the ideal home for those seeking value, space, and convenience.

Built in 1983

### Essential Information

MLS® #	E4442879
Price	\$524,900
Bedrooms	4
Bathrooms	3.00
Full Baths	3
Square Footage	1,241



Acres	0.00
Year Built	1983
Type	Single Family
Sub-Type	Detached Single Family
Style	Bi-Level
Status	Active

### Community Information

Address	63 Glenwood Crescent
Area	Stony Plain
Subdivision	Glens The
City	Stony Plain
County	ALBERTA
Province	AB
Postal Code	T7Z 1A4

### Amenities

Amenities	Air Conditioner, Deck, Detectors Smoke, Insulation-Upgraded, No Smoking Home, Exterior Walls 2"x8", Exterior Walls 2"x12"
Parking	Double Garage Attached, Heated, RV Parking

### Interior

Interior Features	ensuite bathroom
Appliances	Air Conditioning-Central, Dishwasher-Built-In, Dryer, Garage Control, Garage Opener, Microwave Hood Fan, Refrigerator, Stove-Electric, Washer, Window Coverings
Heating	Forced Air-1, Natural Gas
Stories	2
Has Basement	Yes
Basement	Full, Finished

### Exterior

Exterior	Wood, Brick, Vinyl
Exterior Features	Back Lane, Cul-De-Sac, Fenced, Flat Site, Schools
Roof	Asphalt Shingles
Construction	Wood, Brick, Vinyl
Foundation	Preserved Wood

### Additional Information

Date Listed	June 16th, 2025
-------------	-----------------

Days on Market 90

Zoning Zone 91

DATA IS DEEMED RELIABLE BUT IS NOT GUARANTEED ACCURATE BY THE REALTORS® ASSOCIATION OF EDMONTON. COPYRIGHT 2025 BY THE REALTORS® ASSOCIATION OF EDMONTON. ALL RIGHTS RESERVED. Trademarks are owned or controlled by the Canadian Real Estate Association (CREA) and identify real estate professionals who are members of CREA (REALTOR®, REALTORS®) and/or the quality of services they provide (MLS®, Multiple Listing Service®)

Listing information last updated on September 13th, 2025 at 9:31pm MDT