

# \$2,900,000 - 12720-12740 Fort Road Road, Edmonton

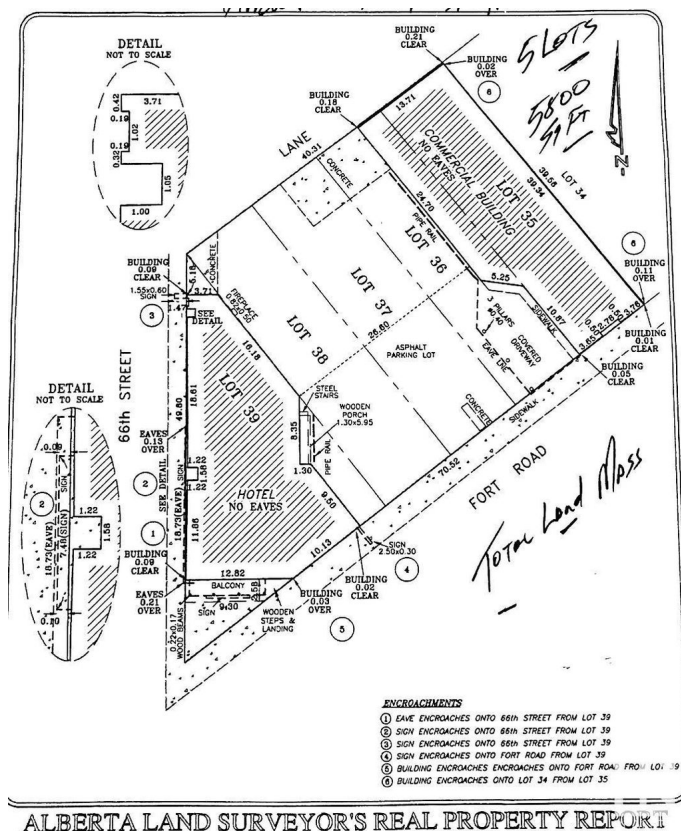
MLS® #E4442864

**\$2,900,000**

0 Bedroom, 0.00 Bathroom,  
Land Commercial on 0.00 Acres

Belvedere, Edmonton, AB

ATTENTION INVESTORS and DEVELOPERS! HIGH EXPOSURE MIXED-USE COMMERCIAL DEVELOPMENT LAND TOTALLING 5 LOTS in a rapidly expanding North Central Edmonton corner strategically located steps from the Yellowhead Highway with direct access to Fort Road. This high-profile corner land offers seamless connectivity to all amenities with a quick and easy commute to all main highways. Tremendous opportunity for mixed-use commercial developments and Multi-family projects with high visibility, strong traffic exposure, and excellent accessibility, this site is ideal for investors and developers looking to capitalize on a rapidly growing Community of Belvedere.



## Essential Information

MLS® #	E4442864
Price	\$2,900,000
Bathrooms	0.00
Acres	0.00
Type	Land Commercial
Status	Active

## Community Information

Address	12720-12740 Fort Road Road
Area	Edmonton

Subdivision	Belvedere
City	Edmonton
County	ALBERTA
Province	AB
Postal Code	T5A 1A6

### Exterior

Exterior	See Remarks
Construction	See Remarks

### Additional Information

Date Listed	June 17th, 2025
Days on Market	26
Zoning	Zone 02

DATA IS DEEMED RELIABLE BUT IS NOT GUARANTEED ACCURATE BY THE REALTORS® ASSOCIATION OF EDMONTON. COPYRIGHT 2025 BY THE REALTORS® ASSOCIATION OF EDMONTON. ALL RIGHTS RESERVED. Trademarks are owned or controlled by the Canadian Real Estate Association (CREA) and identify real estate professionals who are members of CREA (REALTOR®, REALTORS®) and/or the quality of services they provide (MLS®, Multiple Listing Service®)

Listing information last updated on July 13th, 2025 at 12:02pm MDT