

## \$84,900 - 204 10415 93 Street, Edmonton

MLS® #E4442628

**\$84,900**

2 Bedroom, 1.00 Bathroom, 722 sqft

Condo / Townhouse on 0.00 Acres

Boyle Street, Edmonton, AB

Close to Jasper Ave, Rogers Place and the river valley, this location is unbeatable! This turn key condo has been recently updated with fresh paint and is ready for it's new owner!

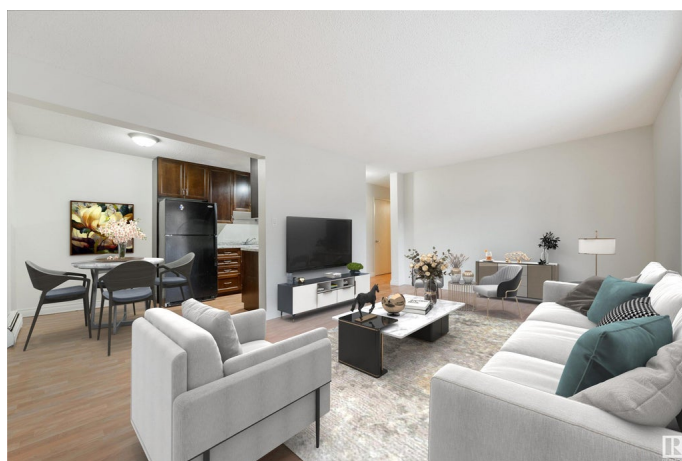
This home features a galley kitchen with modern cabinets and a dedicated dining area.

The living room is large with plenty of room and many potential layout options for your furniture. Enjoy a spacious master bedroom and second bedroom, ideal for roommates, young families or a home office space. The 4 pc bath completes this space. Enjoy BBQing and your morning coffee from your East facing balcony. This unit comes with one stall and has plenty of street parking available. This location is ideal for young professionals who want to enjoy some of the city's best restaurants, events and recreation.

Built in 1970

### Essential Information

MLS® #	E4442628
Price	\$84,900
Bedrooms	2
Bathrooms	1.00
Full Baths	1
Square Footage	722
Acres	0.00
Year Built	1970



Type	Condo / Townhouse
Sub-Type	Lowrise Apartment
Style	Single Level Apartment
Status	Active

### Community Information

Address	204 10415 93 Street
Area	Edmonton
Subdivision	Boyle Street
City	Edmonton
County	ALBERTA
Province	AB
Postal Code	T5H 1X5

### Amenities

Amenities	Deck
Parking	Stall

### Interior

Appliances	Dishwasher-Built-In, Microwave Hood Fan, Refrigerator, Stove-Electric, Window Coverings
Heating	Baseboard, Natural Gas
# of Stories	3
Stories	1
Has Basement	Yes
Basement	None, No Basement

### Exterior

Exterior	Wood, Brick, Vinyl
Exterior Features	Back Lane, Flat Site, Landscaped, Shopping Nearby
Roof	Flat
Construction	Wood, Brick, Vinyl
Foundation	Concrete Perimeter

### Additional Information

Date Listed	June 16th, 2025
Days on Market	21
Zoning	Zone 13
Condo Fee	\$681

DATA IS DEEMED RELIABLE BUT IS NOT GUARANTEED ACCURATE BY THE REALTORS® ASSOCIATION OF EDMONTON. COPYRIGHT 2025 BY THE REALTORS® ASSOCIATION OF EDMONTON. ALL RIGHTS RESERVED.Trademarks are owned or controlled by the Canadian Real Estate Association (CREA) and identify real estate professionals who are members of CREA (REALTOR®, REALTORS®) and/or the quality of services they provide (MLS®, Multiple Listing Service®)

Listing information last updated on July 7th, 2025 at 6:02pm MDT