

# **\$1,295,000 - 3287 Whitelaw Drive, Edmonton**

MLS® #E4441277

**\$1,295,000**

6 Bedroom, 5.00 Bathroom, 3,369 sqft

Single Family on 0.00 Acres

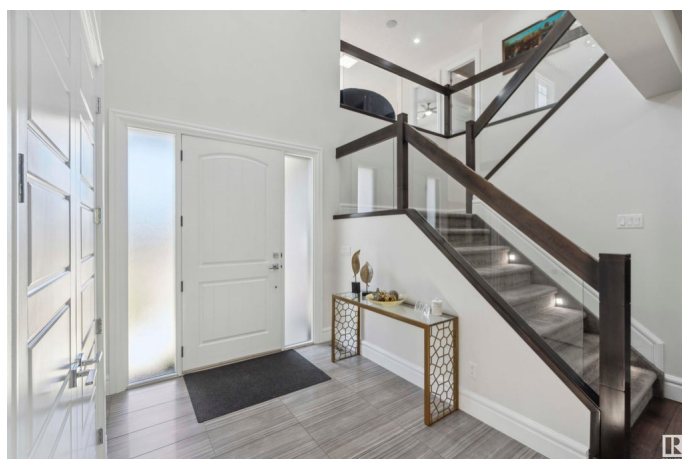
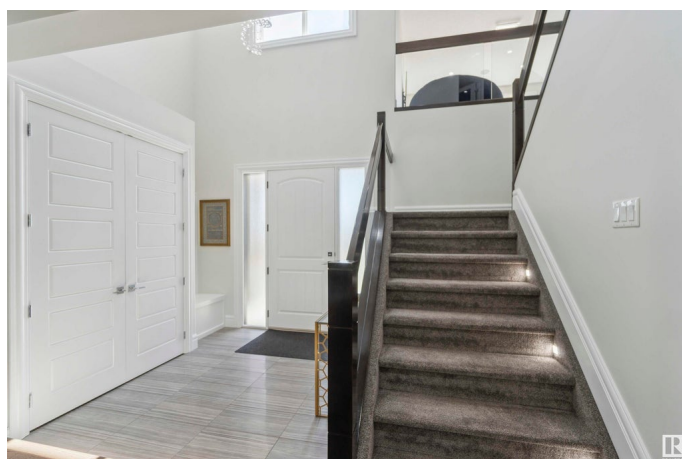
Windermere, Edmonton, AB

LUXURIOUS CUSTOM-BUILT 2-story home with close to 4600 SQFT OF FINISHED LIVING SPACE in Windermere, featuring 6 bedrooms, 5 bathrooms, air-conditioning and a TRIPLE OVERSIZED HEATED ATTACHED GARAGE. The main level offers a guest suite with ensuite, spacious great room with fireplace, gourmet kitchen with quartz countertops and stainless-steel appliances, AN ADDITIONAL FULL SPICE KITCHEN, coffered ceiling in dining area, and covered deck. The second level includes the primary bedroom with 5 pcs ensuite, two bedrooms with a Jack and Jill bath, another large bedroom with 4 pcs ensuite, laundry room and a BRIGHT BONUS ROOM. The FULLY FINISHED BASEMENT includes a rec room, office, exercise room, wet bar, plenty of storage, and ANOTHER LARGE BEDROOM WITH ENSUITE. Enjoy the LOW-MAINTENANCE LANDSCAPING with artificial turf, stone water feature, premium rock, and fencing for added privacy. The whole home was recently painted and new carpeting throughout.

Built in 2015

## **Essential Information**

MLS® #	E4441277
Price	\$1,295,000



Bedrooms	6
Bathrooms	5.00
Full Baths	5
Square Footage	3,369
Acres	0.00
Year Built	2015
Type	Single Family
Sub-Type	Detached Single Family
Style	2 Storey
Status	Active

### Community Information

Address	3287 Whitelaw Drive
Area	Edmonton
Subdivision	Windermere
City	Edmonton
County	ALBERTA
Province	AB
Postal Code	T6W 0P5

### Amenities

Amenities	Air Conditioner, Ceiling 9 ft., Deck, Exercise Room, Hot Water Natural Gas, No Animal Home
Parking Spaces	6
Parking	Heated, Triple Garage Attached

### Interior

Interior Features	ensuite bathroom
Appliances	Air Conditioning-Central, Dryer, Garage Opener, Hood Fan, Humidifier-Power(Furnace), Microwave Hood Fan, Oven-Built-In, Oven-Microwave, Stove-Countertop Gas, Stove-Gas, Washer, Window Coverings, Refrigerators-Two, Dishwasher-Two, Garage Heater
Heating	Forced Air-2, Natural Gas
Fireplace	Yes
Fireplaces	Wall Mount
Stories	3
Has Basement	Yes
Basement	Full, Finished

### Exterior

Exterior	Wood, Stone, Vinyl
Exterior Features	Airport Nearby, Fenced, Landscaped, Low Maintenance Landscape, Playground Nearby, Schools, Shopping Nearby
Roof	Asphalt Shingles
Construction	Wood, Stone, Vinyl
Foundation	Concrete Perimeter

**School Information**

Elementary	Constable Daniel Woodall
Middle	Riverbend School
High	Lillian Osborne School

**Additional Information**

Date Listed	June 9th, 2025
Days on Market	7
Zoning	Zone 56
HOA Fees	210
HOA Fees Freq.	Monthly

DATA IS DEEMED RELIABLE BUT IS NOT GUARANTEED ACCURATE BY THE REALTORS® ASSOCIATION OF EDMONTON. COPYRIGHT 2025 BY THE REALTORS® ASSOCIATION OF EDMONTON. ALL RIGHTS RESERVED.Trademarks are owned or controlled by the Canadian Real Estate Association (CREA) and identify real estate professionals who are members of CREA (REALTOR®, REALTORS®) and/or the quality of services they provide (MLS®, Multiple Listing Service®)

Listing information last updated on June 16th, 2025 at 6:47am MDT