

\$259,900 - 308 10147 112 Street, Edmonton

MLS® #E4441155

\$259,900

2 Bedroom, 2.00 Bathroom, 1,012 sqft

Condo / Townhouse on 0.00 Acres

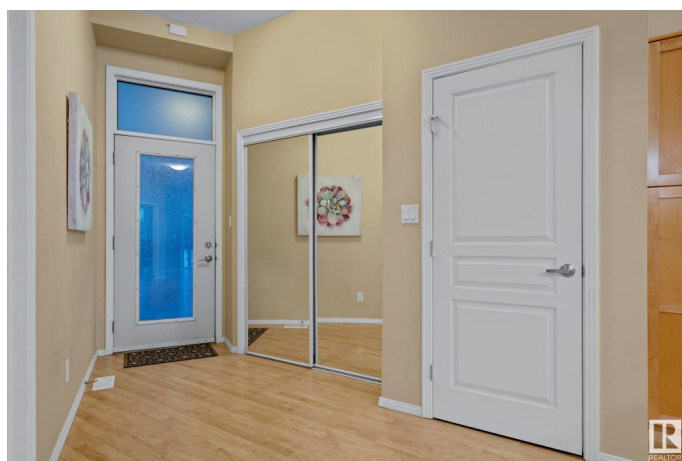
WÃ@hkwÃªntÃ´win, Edmonton, AB

The one you have been waiting for - in the heart of city! Welcome to Gates on Twelfth where urban living meets comfort and style. This bright and spacious 2 bedroom/ 2 bathroom condo features 10' ceilings, massive windows, and an open-concept floor plan. You'll love the central kitchen with plenty of cabinetry and long island - perfect for entertaining. The primary suite offers a walk-in closet and 3pc ensuite with extended counter space. Enjoy your morning coffee while watching the sunrise from your east-facing balcony. A second generous bedroom, 4pc bathroom and in-suite laundry for your convenience. Enjoy secure underground parking, extra storage, and unbeatable walkability to coffee shops, boutiques, groceries, the LRT, and Edmontonâ€™s stunning River Valley trails. With easy access to downtown, U of A, and MacEwan, this location truly has it all. Welcome home!

Built in 2004

Essential Information

| | |
|------------|-----------|
| MLS® # | E4441155 |
| Price | \$259,900 |
| Bedrooms | 2 |
| Bathrooms | 2.00 |
| Full Baths | 2 |



| | |
|----------------|------------------------|
| Square Footage | 1,012 |
| Acres | 0.00 |
| Year Built | 2004 |
| Type | Condo / Townhouse |
| Sub-Type | Lowrise Apartment |
| Style | Single Level Apartment |
| Status | Active |

Community Information

| | |
|-------------|----------------------|
| Address | 308 10147 112 Street |
| Area | Edmonton |
| Subdivision | WÃ©hkwÃªntÃ´win |
| City | Edmonton |
| County | ALBERTA |
| Province | AB |
| Postal Code | T5K 1M1 |

Amenities

| | |
|-----------|-----------------------------------|
| Amenities | Off Street Parking, Security Door |
| Parking | Heated, Parkade, Underground |

Interior

| | |
|-------------------|---|
| Interior Features | ensuite bathroom |
| Appliances | Dishwasher-Built-In, Microwave Hood Fan, Refrigerator, Stacked Washer/Dryer, Stove-Electric |
| Heating | Forced Air-1, Natural Gas |
| # of Stories | 5 |
| Stories | 1 |
| Has Basement | Yes |
| Basement | None, No Basement |

Exterior

| | |
|-------------------|--|
| Exterior | Wood, Stucco |
| Exterior Features | Gated Community, Playground Nearby, Public Transportation, Schools, Shopping Nearby, View Downtown |
| Roof | Flat, SBS Roofing System |
| Construction | Wood, Stucco |
| Foundation | Concrete Perimeter |

School Information

| | |
|------------|-----------------------------|
| Elementary | Wihkwentowin / St.Catherine |
| Middle | Westminster / St.Catherine |
| High | Victoria / St.Joseph |

Additional Information

| | |
|----------------|----------------|
| Date Listed | June 7th, 2025 |
| Days on Market | 30 |
| Zoning | Zone 12 |
| Condo Fee | \$458 |

DATA IS DEEMED RELIABLE BUT IS NOT GUARANTEED ACCURATE BY THE REALTORS® ASSOCIATION OF EDMONTON. COPYRIGHT 2025 BY THE REALTORS® ASSOCIATION OF EDMONTON. ALL RIGHTS RESERVED. Trademarks are owned or controlled by the Canadian Real Estate Association (CREA) and identify real estate professionals who are members of CREA (REALTOR®, REALTORS®) and/or the quality of services they provide (MLS®, Multiple Listing Service®)

Listing information last updated on July 7th, 2025 at 3:02pm MDT