

\$449,000 - 7715 Schmid Crescent, Edmonton

MLS® #E4440022

\$449,000

3 Bedroom, 2.50 Bathroom, 1,513 sqft

Single Family on 0.00 Acres

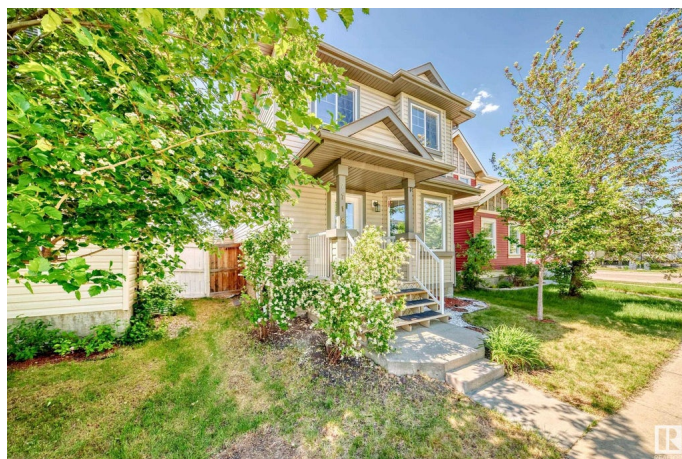
South Terwillegar, Edmonton, AB

Welcome to South Terwillegar-where family living meets everyday convenience! This lovely 2-storey home offers 3 generously sized bedrooms, 2.5 baths and sunlit front office-perfect for a study or home workspace. Enjoy your morning coffee on the spacious deck and take advantage of the double detached garage that backs onto a peaceful walkway, leading to beautiful trails, ponds, kids spray park, including Terwillegar Park. Located just minutes from schools, shopping, the Terwillegar recreation center and Leger bus transit depo. This home sits in a welcoming ,family-oriented neighborhood you will love calling home.

Built in 2010

Essential Information

MLS® #	E4440022
Price	\$449,000
Bedrooms	3
Bathrooms	2.50
Full Baths	2
Half Baths	1
Square Footage	1,513
Acres	0.00
Year Built	2010
Type	Single Family



Sub-Type	Detached Single Family
Style	2 Storey
Status	Active

Community Information

Address	7715 Schmid Crescent
Area	Edmonton
Subdivision	South Terwillegar
City	Edmonton
County	ALBERTA
Province	AB
Postal Code	T6R 0K6

Amenities

Amenities	Deck
Parking	Double Garage Detached

Interior

Interior Features	ensuite bathroom
Appliances	Dishwasher-Built-In, Dryer, Garage Control, Garage Opener, Refrigerator, Stove-Electric, Washer, Window Coverings
Heating	Forced Air-1, Natural Gas
Fireplace	Yes
Fireplaces	Glass Door, Mantel
Stories	2
Has Basement	Yes
Basement	Full, Unfinished

Exterior

Exterior	Wood, Vinyl
Exterior Features	Back Lane, Landscaped, Playground Nearby, Public Transportation, Schools, Shopping Nearby
Roof	Asphalt Shingles
Construction	Wood, Vinyl
Foundation	Concrete Perimeter

School Information

Elementary	Esther Starkman
Middle	Nellie Carlson

High Lilian Osborne

Additional Information

Date Listed June 3rd, 2025
Days on Market 15
Zoning Zone 14
HOA Fees 138
HOA Fees Freq. Annually

DATA IS DEEMED RELIABLE BUT IS NOT GUARANTEED ACCURATE BY THE REALTORS® ASSOCIATION OF EDMONTON. COPYRIGHT 2025 BY THE REALTORS® ASSOCIATION OF EDMONTON. ALL RIGHTS RESERVED.Trademarks are owned or controlled by the Canadian Real Estate Association (CREA) and identify real estate professionals who are members of CREA (REALTOR®, REALTORS®) and/or the quality of services they provide (MLS®, Multiple Listing Service®)
Listing information last updated on June 18th, 2025 at 7:02am MDT