

\$425,000 - 4432 Prowse Road, Edmonton

MLS® #E4439866

\$425,000

3 Bedroom, 3.00 Bathroom, 1,724 sqft

Single Family on 0.00 Acres

Paisley, Edmonton, AB

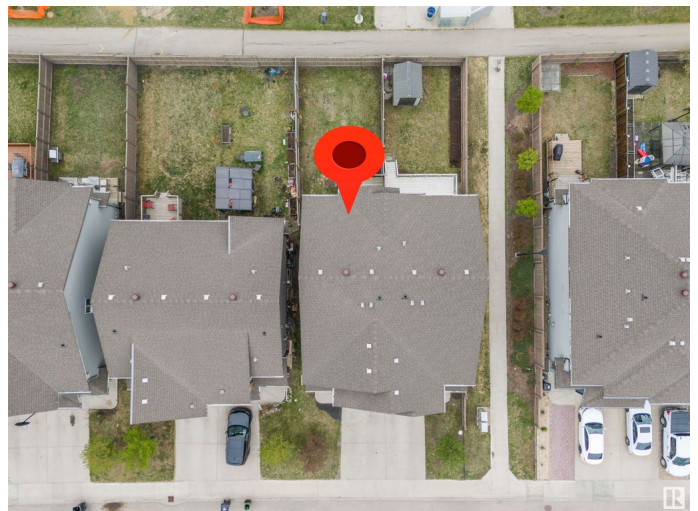
METICULOUSLY MAINTAINED HALF DUPLEX, where stunning vinyl floors and composite countertops set the stage for refined living. The attention to detail is evident from the moment you step into the front foyer adorned with ceramic tiles—perfect for those damp boots. Ascend a flight of stairs to discover a thoughtfully designed layout, beginning with a 2-PIECE BATHROOM, leading seamlessly into a kitchen that oversees the dining and living rooms. The next level reveals a haven of privacy—the PRIMARY BEDROOM, strategically separated from the children's rooms. This retreat offers the serenity and tranquility you deserve, complete with an en-suite bathroom and a walk-in closet adorned with a window. An additional bonus room on this level provides a space for intimate family moments, flanked by two bedrooms—one boasting its own walk-in closet. The convenience of having LAUNDRY ON THE BEDROOM LEVEL is a true time-saver. Situated in an AMAZING LOCATION, this property offers unparalleled convenience!

Built in 2015

Essential Information

MLS® # E4439866

Price \$425,000



| | |
|----------------|---------------|
| Bedrooms | 3 |
| Bathrooms | 3.00 |
| Full Baths | 3 |
| Square Footage | 1,724 |
| Acres | 0.00 |
| Year Built | 2015 |
| Type | Single Family |
| Sub-Type | Half Duplex |
| Style | 2 Storey |
| Status | Active |

Community Information

| | |
|-------------|------------------|
| Address | 4432 Prowse Road |
| Area | Edmonton |
| Subdivision | Paisley |
| City | Edmonton |
| County | ALBERTA |
| Province | AB |
| Postal Code | T6W 3A5 |

Amenities

| | |
|-----------|------------------------|
| Amenities | See Remarks |
| Parking | Single Garage Attached |

Interior

| | |
|-------------------|--|
| Interior Features | ensuite bathroom |
| Appliances | Dishwasher-Built-In, Dryer, Refrigerator, Stove-Electric, Washer |
| Heating | Forced Air-1, Natural Gas |
| Stories | 2 |
| Has Basement | Yes |
| Basement | Full, Unfinished |

Exterior

| | |
|-------------------|--|
| Exterior | Wood, Vinyl |
| Exterior Features | Fenced, Landscaped, Schools, Shopping Nearby |
| Roof | Asphalt Shingles |
| Construction | Wood, Vinyl |
| Foundation | Concrete Perimeter |

School Information

| | |
|------------|--------------------------|
| Elementary | Steinhauer School |
| Middle | D.S Mackenzie School |
| High | Dr. Anne Anderson School |

Additional Information

| | |
|-------------|----------------|
| Date Listed | June 2nd, 2025 |
|-------------|----------------|

| | |
|----------------|----|
| Days on Market | 16 |
|----------------|----|

| | |
|--------|---------|
| Zoning | Zone 55 |
|--------|---------|

DATA IS DEEMED RELIABLE BUT IS NOT GUARANTEED ACCURATE BY THE REALTORS® ASSOCIATION OF EDMONTON. COPYRIGHT 2025 BY THE REALTORS® ASSOCIATION OF EDMONTON. ALL RIGHTS RESERVED.Trademarks are owned or controlled by the Canadian Real Estate Association (CREA) and identify real estate professionals who are members of CREA (REALTOR®, REALTORS®) and/or the quality of services they provide (MLS®, Multiple Listing Service®)

Listing information last updated on June 18th, 2025 at 9:18am MDT