

Courtesy Of Jane Vu Of Real Broker

\$525,000 - 14029 146 Avenue, Edmonton

MLS® #E4439394

\$525,000

3 Bedroom, 3.00 Bathroom, 1,935 sqft
Single Family on 0.00 Acres

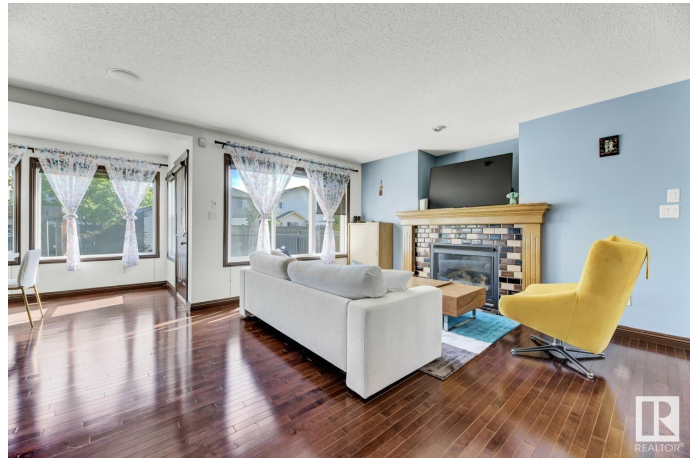
Cumberland, Edmonton, AB

Welcome to Cumberland, a beautiful & family-friendly neighbourhood in northwest Edmonton! This stunning 2-storey home offers over 1,900 sq ft above grade plus a fully finished basement, giving you plenty of space to live, work, and entertain. Enjoy the peace of mind that comes with a brand new roof (2024). Just a 5-minute walk to Hilvie Hamdon KÇ School and playground, and a quick 4-minute drive to Lucky Supermarket, Kensington Crossing, and Skyview Centre for all your shopping and dining needs. The main floor showcases gleaming hardwood floors, a spacious living and dining area with large windows, and a chef-friendly kitchen with a raised eating bar and walk-in pantry. Upstairs features 3 large bedrooms, including a luxurious primary suite with a custom-built walk-in closet and spa-style ensuite with soaker tub and double shower. The basement includes a cozy family room, games area, wine room, and 2-pc bath. Perfect for young families, investors, or anyone looking for a home in an amazing neighbourhood.

Built in 2007

Essential Information

MLS® #	E4439394
Price	\$525,000



Bedrooms	3
Bathrooms	3.00
Full Baths	2
Half Baths	2
Square Footage	1,935
Acres	0.00
Year Built	2007
Type	Single Family
Sub-Type	Detached Single Family
Style	2 Storey
Status	Active

Community Information

Address	14029 146 Avenue
Area	Edmonton
Subdivision	Cumberland
City	Edmonton
County	ALBERTA
Province	AB
Postal Code	T6V 1Y1

Amenities

Amenities	Closet Organizers, Deck, Detectors Smoke, No Animal Home, No Smoking Home, Vinyl Windows
Parking Spaces	4
Parking	Double Garage Attached

Interior

Interior Features	ensuite bathroom
Appliances	Dishwasher-Built-In, Dryer, Garage Control, Garage Opener, Hood Fan, Refrigerator, Stove-Electric, Washer
Heating	Forced Air-1, Natural Gas
Stories	3
Has Basement	Yes
Basement	Full, Finished

Exterior

Exterior	Wood, Vinyl
Exterior Features	Fenced, Flat Site, Landscaped, Low Maintenance Landscape, No Back

Lane, Playground Nearby, Public Transportation, Schools, Shopping
Nearby

Roof	Asphalt Shingles
Construction	Wood, Vinyl
Foundation	Concrete Perimeter

Additional Information

Date Listed	May 30th, 2025
Days on Market	8
Zoning	Zone 27

DATA IS DEEMED RELIABLE BUT IS NOT GUARANTEED ACCURATE BY THE REALTORS® ASSOCIATION OF EDMONTON. COPYRIGHT 2025 BY THE REALTORS® ASSOCIATION OF EDMONTON. ALL RIGHTS RESERVED. Trademarks are owned or controlled by the Canadian Real Estate Association (CREA) and identify real estate professionals who are members of CREA (REALTOR®, REALTORS®) and/or the quality of services they provide (MLS®, Multiple Listing Service®)

Listing information last updated on June 6th, 2025 at 11:17pm MDT