

## \$558,888 - 6719 Crawford Way, Edmonton

MLS® #E4439379

**\$558,888**

3 Bedroom, 2.50 Bathroom, 2,043 sqft

Single Family on 0.00 Acres

Chappelle Area, Edmonton, AB

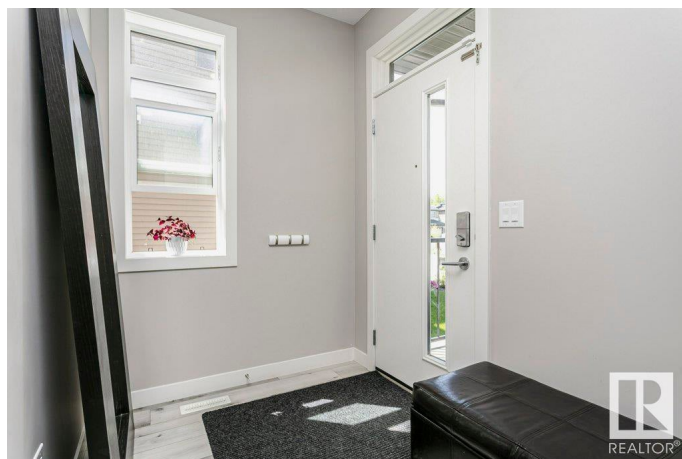
Welcome to The Collections at Creekwood â€” One of Edmontonâ€™s Most Sought-After New Communities! Discover this beautifully designed home by Crystal Creek Homes, ideally located near the scenic Whitemud Creek Ravine and just steps from a brand-new K-9 schoolâ€”perfect for families. Boasting over 2,000 sq. ft. of thoughtfully designed living space, this home features 9 & 10' ceilings, a functional, open-concept layout, and premium finishes throughout. The thoughtful family kitchen includes modern granite countertops, extra cabinetry, and a walk-in pantryâ€”perfect for everyday living and entertaining. The spacious living and dining areas are ideal for hosting family gatherings, while the upper level offers a generous bonus room, three bedrooms, and a relaxing primary suite complete with a spa-like ensuite. You'll also love the convenience of upstairs laundry and the separate side entrance to the basement, offering future development potential. The eye-catching exterior has impeccable curb appeal.

Built in 2019

### Essential Information

MLS® # E4439379

Price \$558,888



Bedrooms	3
Bathrooms	2.50
Full Baths	2
Half Baths	1
Square Footage	2,043
Acres	0.00
Year Built	2019
Type	Single Family
Sub-Type	Detached Single Family
Style	2 Storey
Status	Active

### Community Information

Address	6719 Crawford Way
Area	Edmonton
Subdivision	Chappelle Area
City	Edmonton
County	ALBERTA
Province	AB
Postal Code	T6W 4L7

### Amenities

Amenities	Ceiling 10 ft., Ceiling 9 ft., No Smoking Home, Natural Gas BBQ Hookup
Parking Spaces	5
Parking	Double Garage Attached

### Interior

Interior Features	ensuite bathroom
Appliances	Dishwasher-Built-In, Dryer, Garage Control, Garage Opener, Microwave Hood Fan, Refrigerator, Washer
Heating	Forced Air-1, Natural Gas
Fireplace	Yes
Fireplaces	Mantel
Stories	2
Has Basement	Yes
Basement	Full, Unfinished

### Exterior

Exterior	Wood, Stone, Vinyl
----------	--------------------

Exterior Features	Airport Nearby, Flat Site, Low Maintenance Landscape
Roof	Asphalt Shingles
Construction	Wood, Stone, Vinyl
Foundation	Concrete Perimeter

**Additional Information**

Date Listed	May 30th, 2025
Days on Market	8
Zoning	Zone 55

DATA IS DEEMED RELIABLE BUT IS NOT GUARANTEED ACCURATE BY THE REALTORS® ASSOCIATION OF EDMONTON. COPYRIGHT 2025 BY THE REALTORS® ASSOCIATION OF EDMONTON. ALL RIGHTS RESERVED.Trademarks are owned or controlled by the Canadian Real Estate Association (CREA) and identify real estate professionals who are members of CREA (REALTOR®, REALTORS®) and/or the quality of services they provide (MLS®, Multiple Listing Service®)

Listing information last updated on June 6th, 2025 at 10:47pm MDT