

# \$349,900 - 7823 148 Avenue, Edmonton

MLS® #E4438605

## \$349,900

3 Bedroom, 1.50 Bathroom, 1,157 sqft  
Single Family on 0.00 Acres

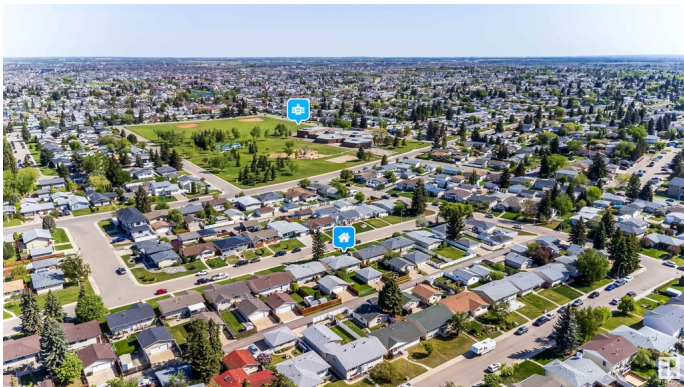
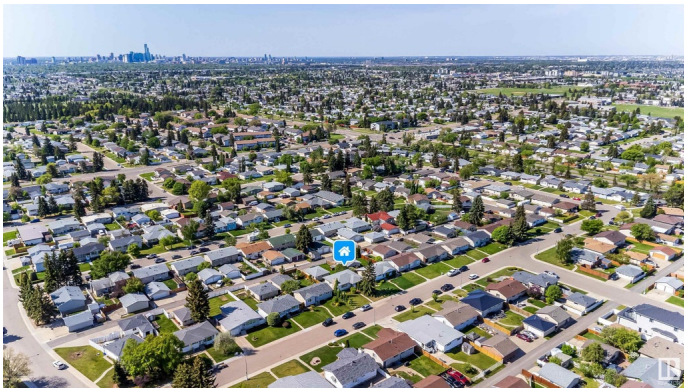
Kilkenny, Edmonton, AB

Come and see this charming 1968 Bungalow in the Heart of Kilkenny! This 3-bedroom, 1.5-bath detached home offers 1,157 sq ft of classic character and great potential. Nestled on a quiet, family-friendly street in the desirable Kilkenny neighborhood, this nearly original bungalow is perfect for those looking to renovate and make it their own. The spacious layout includes a large living room, eat-in kitchen, and good-sized bedrooms, all waiting for your personal touch. The generous lot offers ample yard space and plenty of room for outdoor enjoyment. Ideal for investors, first-time buyers, or anyone with a visionâ€™donâ€™t miss this great opportunity in a fantastic location!

Built in 1968

### Essential Information

MLS® #	E4438605
Price	\$349,900
Bedrooms	3
Bathrooms	1.50
Full Baths	1
Half Baths	1
Square Footage	1,157
Acres	0.00
Year Built	1968



Type	Single Family
Sub-Type	Detached Single Family
Style	Bungalow
Status	Active

### **Community Information**

Address	7823 148 Avenue
Area	Edmonton
Subdivision	Kilkenny
City	Edmonton
County	ALBERTA
Province	AB
Postal Code	T5C 2T8

### **Amenities**

Amenities	On Street Parking, See Remarks
Parking	Double Garage Detached

### **Interior**

Interior Features	ensuite bathroom
Appliances	Window Coverings
Heating	Forced Air-1, Natural Gas
Fireplace	Yes
Fireplaces	Brick Facing
Stories	1
Has Basement	Yes
Basement	Full, Partially Finished

### **Exterior**

Exterior	Wood, Vinyl
Exterior Features	Fenced, Playground Nearby, Public Transportation, Schools, Shopping Nearby
Roof	Asphalt Shingles
Construction	Wood, Vinyl
Foundation	Concrete Perimeter

### **Additional Information**

Date Listed	May 26th, 2025
Days on Market	4

## Zoning

## Zone 02

DATA IS DEEMED RELIABLE BUT IS NOT GUARANTEED ACCURATE BY THE REALTORS® ASSOCIATION OF EDMONTON. COPYRIGHT 2025 BY THE REALTORS® ASSOCIATION OF EDMONTON. ALL RIGHTS RESERVED. Trademarks are owned or controlled by the Canadian Real Estate Association (CREA) and identify real estate professionals who are members of CREA (REALTOR®, REALTORS®) and/or the quality of services they provide (MLS®, Multiple Listing Service®)

Listing information last updated on May 30th, 2025 at 4:02am MDT