

# \$359,000 - 7115 12 Avenue, Edmonton

MLS® #E4438107

**\$359,000**

4 Bedroom, 2.00 Bathroom, 908 sqft  
Single Family on 0.00 Acres

Menisa, Edmonton, AB

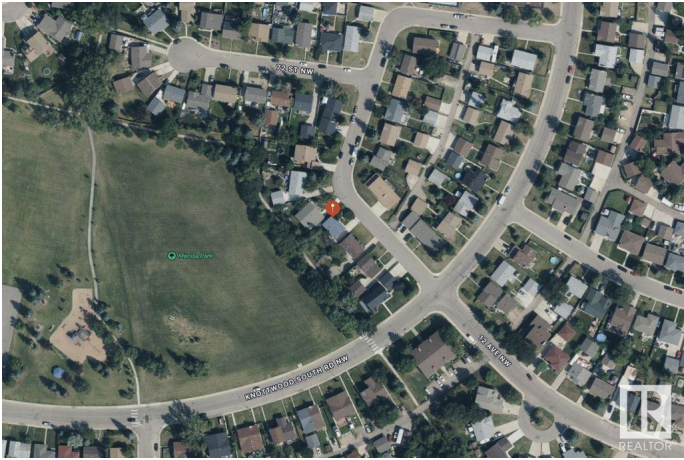
Opportunity knocks! Amazing and unbeatable location, backing onto Menisa Park. This fully finished bi-level offers the perfect chance to build sweat equity and make it your own. With 4 bedrooms and 2 full bathrooms, there's plenty of space for a growing family or investment potential. Enjoy a large backyard, front driveway, and ample parking. Nestled on a well-kept street, you're close to schools, shopping, and all major amenities. What are you waiting for?

Built in 1977

## Essential Information

|                |                        |
|----------------|------------------------|
| MLS® #         | E4438107               |
| Price          | \$359,000              |
| Bedrooms       | 4                      |
| Bathrooms      | 2.00                   |
| Full Baths     | 2                      |
| Square Footage | 908                    |
| Acres          | 0.00                   |
| Year Built     | 1977                   |
| Type           | Single Family          |
| Sub-Type       | Detached Single Family |
| Style          | Bi-Level               |
| Status         | Active                 |

## Community Information



|             |                |
|-------------|----------------|
| Address     | 7115 12 Avenue |
| Area        | Edmonton       |
| Subdivision | Menisa         |
| City        | Edmonton       |
| County      | ALBERTA        |
| Province    | AB             |
| Postal Code | T6K 3H6        |

### **Amenities**

|           |  |
|-----------|--|
| Amenities | Off Street Parking, On Street Parking, Vinyl Windows     |
| Parking   | Front Drive Access, Parking Pad Cement/Paved, RV Parking |

### **Interior**

|              |                           |
|--------------|---------------------------|
| Appliances   | See Remarks               |
| Heating      | Forced Air-1, Natural Gas |
| Stories      | 2                         |
| Has Basement | Yes                       |
| Basement     | Full, Finished            |

### **Exterior**

|                   |   |
|-------------------|---|
| Exterior          | Wood, Vinyl   |
| Exterior Features | Backs Onto Park/Trees, Fenced, Fruit Trees/Shrubs, Golf Nearby, Landscaped, No Back Lane, Playground Nearby, Schools, Shopping Nearby |
| Roof              | Asphalt Shingles  |
| Construction      | Wood, Vinyl   |
| Foundation        | Concrete Perimeter  |

### **Additional Information**

|                |                |
|----------------|----------------|
| Date Listed    | May 23rd, 2025 |
| Days on Market | 9              |
| Zoning         | Zone 29        |

DATA IS DEEMED RELIABLE BUT IS NOT GUARANTEED ACCURATE BY THE REALTORS® ASSOCIATION OF EDMONTON. COPYRIGHT 2025 BY THE REALTORS® ASSOCIATION OF EDMONTON. ALL RIGHTS RESERVED. Trademarks are owned or controlled by the Canadian Real Estate Association (CREA) and identify real estate professionals who are members of CREA (REALTOR®, REALTORS®) and/or the quality of services they provide (MLS®, Multiple Listing Service®)

Listing information last updated on June 1st, 2025 at 1:17pm MDT