

# \$199,900 - 313 340 Windermere Road, Edmonton

MLS® #E4437998

**\$199,900**

2 Bedroom, 2.00 Bathroom, 746 sqft

Condo / Townhouse on 0.00 Acres

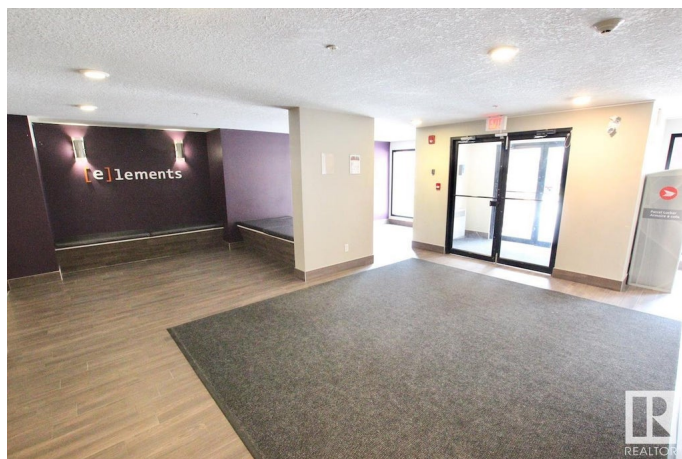
Windermere, Edmonton, AB

Beautiful 2 bedroom 2 bath condo living with open concept, stainless steel appliances and so much more! BRAND NEW FLOORING INSTALLED JUNE 20 2025! Primary bedroom has a walkthrough closet and a 4pc ensuite . Plenty of storage and in-suite laundry makes condo life easy. Close to schools shopping and one of the best cinemas in the city! Park in your titled stall close to the building entrance and take advantage of the elevator to get up to your new home quickly. With a vast east facing balcony there is room for patio furniture and bbq. Come take a look this awesome unit in highly sought after Windermere location!

Built in 2014

## Essential Information

MLS® #	E4437998
Price	\$199,900
Bedrooms	2
Bathrooms	2.00
Full Baths	2
Square Footage	746
Acres	0.00
Year Built	2014
Type	Condo / Townhouse
Sub-Type	Lowrise Apartment
Style	Single Level Apartment



Status Active

### Community Information

Address 313 340 Windermere Road  
Area Edmonton  
Subdivision Windermere  
City Edmonton  
County ALBERTA  
Province AB  
Postal Code T6W 2P2

### Amenities

Amenities Deck, Parking-Plug-Ins, Parking-Visitor, Sprinkler System-Fire, Storage-In-Suite  
Parking Stall

### Interior

Interior Features ensuite bathroom  
Appliances Dishwasher-Built-In, Microwave Hood Fan, Refrigerator, Stacked Washer/Dryer, Stove-Electric  
Heating Baseboard, Natural Gas  
# of Stories 4  
Stories 1  
Has Basement Yes  
Basement None, No Basement

### Exterior

Exterior Wood, Stucco, Vinyl  
Exterior Features Schools, Shopping Nearby  
Roof Asphalt Shingles  
Construction Wood, Stucco, Vinyl  
Foundation Concrete Perimeter

### Additional Information

Date Listed May 21st, 2025  
Days on Market 43  
Zoning Zone 56  
Condo Fee \$441

DATA IS DEEMED RELIABLE BUT IS NOT GUARANTEED ACCURATE BY THE REALTORS® ASSOCIATION OF EDMONTON. COPYRIGHT 2025 BY THE REALTORS® ASSOCIATION OF EDMONTON. ALL RIGHTS

RESERVED.Trademarks are owned or controlled by the Canadian Real Estate Association (CREA) and identify real estate professionals who are members of CREA (REALTOR®, REALTORS®) and/or the quality of services they provide (MLS®, Multiple Listing Service®)

Listing information last updated on July 3rd, 2025 at 1:32pm MDT