

\$379,900 - 412 51 Eldorado Drive, St. Albert

MLS® #E4437651

\$379,900

2 Bedroom, 2.00 Bathroom, 1,288 sqft
Condo / Townhouse on 0.00 Acres

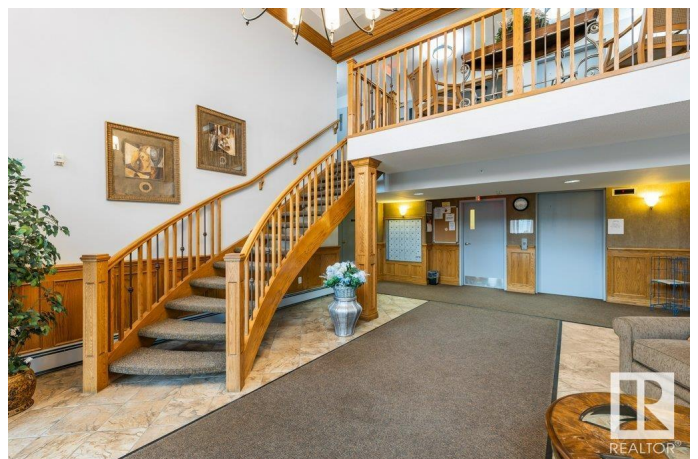
Erin Ridge, St. Albert, AB

This stunning top floor, corner unit, 2-bedroom, 2-bathroom condo offers nearly 1,300 sq ft of stylish, comfortable living PLUS a two car, heated garage! The open floor plan features a charming kitchen with an adjacent dining areaâ€”perfect for intimate mealsâ€”overlooking the spacious living room with a cozy gas fireplace and plenty of windows for an abundance of natural light. The primary suite includes a walk-in closet and private 3 piece ensuite, while the second bedroom is ideal for guests with its own 4 piece bathroom nearby. You'll love the bonus denâ€”great for a home office or reading spaceâ€”and the convenience of in-suite laundry. Step out onto the large, private balcony for fresh air and relaxation. Enjoy the peace of mind and comfort of adult living with close access to walkways, parks & shopping. It truly offers the ideal 55+ living experience at an affordable price making it an absolute must see!

Built in 2004

Essential Information

MLS® #	E4437651
Price	\$379,900
Bedrooms	2
Bathrooms	2.00



Full Baths	2
Square Footage	1,288
Acres	0.00
Year Built	2004
Type	Condo / Townhouse
Sub-Type	Lowrise Apartment
Style	Single Level Apartment
Status	Active

Community Information

Address	412 51 Eldorado Drive
Area	St. Albert
Subdivision	Erin Ridge
City	St. Albert
County	ALBERTA
Province	AB
Postal Code	T8N 7E3

Amenities

Amenities	Ceiling 9 ft., Deck, Exercise Room, Guest Suite, Parking-Visitor, Party Room, Secured Parking, Security Door
Parking	Double Garage Attached, Heated

Interior

Interior Features	ensuite bathroom
Appliances	Dishwasher-Built-In, Dryer, Garage Control, Garage Opener, Microwave Hood Fan, Refrigerator, Stove-Electric, Washer
Heating	Forced Air-1, Natural Gas
# of Stories	4
Stories	1
Has Basement	Yes
Basement	None, No Basement

Exterior

Exterior	Wood, Brick, Vinyl
Exterior Features	Landscaped, Public Transportation, Shopping Nearby, See Remarks
Roof	Asphalt Shingles
Construction	Wood, Brick, Vinyl
Foundation	Concrete Perimeter

Additional Information

Date Listed	May 21st, 2025
Days on Market	2
Zoning	Zone 24
Condo Fee	\$680

DATA IS DEEMED RELIABLE BUT IS NOT GUARANTEED ACCURATE BY THE REALTORS® ASSOCIATION OF EDMONTON. COPYRIGHT 2025 BY THE REALTORS® ASSOCIATION OF EDMONTON. ALL RIGHTS RESERVED.Trademarks are owned or controlled by the Canadian Real Estate Association (CREA) and identify real estate professionals who are members of CREA (REALTOR®, REALTORS®) and/or the quality of services they provide (MLS®, Multiple Listing Service®)

Listing information last updated on May 23rd, 2025 at 5:02am MDT