

Courtesy Of Sarah J Leib Of RE/MAX River City

\$534,900 - 19330 26a Avenue, Edmonton

MLS® #E4436902

\$534,900

3 Bedroom, 2.50 Bathroom, 1,656 sqft
Single Family on 0.00 Acres

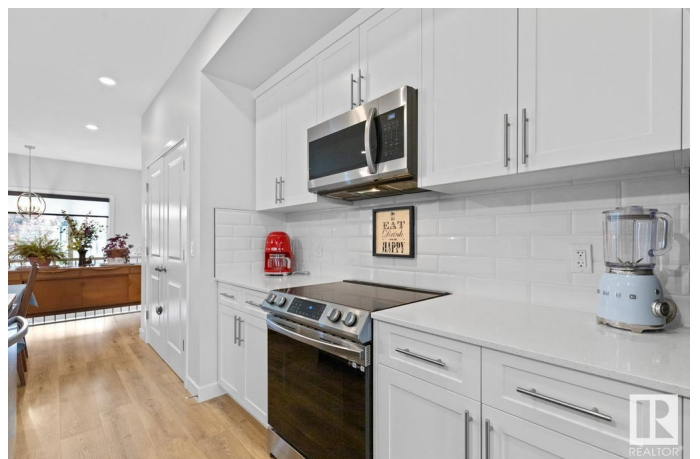
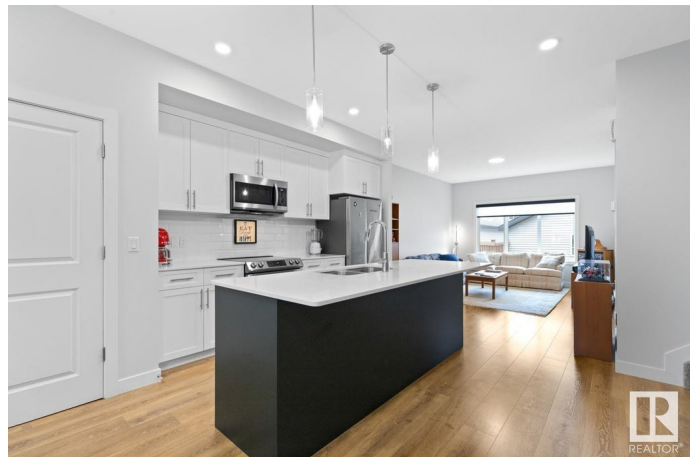
The Uplands, Edmonton, AB

UNIQUE UPLANDS! This detached, 3 Bedroom, 3 Bath property with a rear-detached DOUBLE GARAGE offers a BRIGHT & SUNNY floor plan. The Kitchen includes a large ISLAND, QUARTZ COUNTERTOPS, Stainless Steel Appliances, TWO-TONE CABINETS & a Pantry. Main floor is carpet-free. Upstairs, the Primary Bedroom fits a king-size bed plus a Walk-In Closet & ENSUITE w/ TWO SINKS / VANITIES. Two additional, ample sized Bedrooms are found on this level. Downstairs features an open-to-below section which has a FINISHED REC ROOM. The remainder of the lower level is spacious & includes a rough-in bath & window for future development. BONUS: 9' CEILINGS, Custom Blinds, Custom Built-In Closet Organizers, Transom Windows & UPPER FLOOR LAUNDRY. The Uplands at Riverview community is conveniently located near the Henday Drive with parks, playgrounds, walking trails & nearby amenities such as schools, recreation facilities and shopping. Turn-Key Home!

Built in 2022

Essential Information

MLS® #	E4436902
Price	\$534,900



Bedrooms	3
Bathrooms	2.50
Full Baths	2
Half Baths	1
Square Footage	1,656
Acres	0.00
Year Built	2022
Type	Single Family
Sub-Type	Detached Single Family
Style	2 Storey
Status	Active

Community Information

Address	19330 26a Avenue
Area	Edmonton
Subdivision	The Uplands
City	Edmonton
County	ALBERTA
Province	AB
Postal Code	T6M 1L2

Amenities

Amenities	Ceiling 9 ft., Closet Organizers, Detectors Smoke
Parking	Double Garage Detached

Interior

Interior Features	ensuite bathroom
Appliances	Dishwasher-Built-In, Dryer, Microwave Hood Fan, Refrigerator, Stove-Electric, Washer, Window Coverings
Heating	Forced Air-1, Natural Gas
Stories	3
Has Basement	Yes
Basement	Full, Partially Finished

Exterior

Exterior	Wood, Brick, Vinyl
Exterior Features	Back Lane, Fenced, Flat Site, Landscaped, Low Maintenance Landscape, Paved Lane, Playground Nearby, Public Transportation, Schools, Shopping Nearby

Roof	Asphalt Shingles
Construction	Wood, Brick, Vinyl
Foundation	Concrete Perimeter

School Information

Elementary	Centennial/Good Shepherd
Middle	S B Smith/H E Beriault
High	Jasper Place/St O Romero

Additional Information

Date Listed	May 16th, 2025
Days on Market	32
Zoning	Zone 57

DATA IS DEEMED RELIABLE BUT IS NOT GUARANTEED ACCURATE BY THE REALTORS® ASSOCIATION OF EDMONTON. COPYRIGHT 2025 BY THE REALTORS® ASSOCIATION OF EDMONTON. ALL RIGHTS RESERVED. Trademarks are owned or controlled by the Canadian Real Estate Association (CREA) and identify real estate professionals who are members of CREA (REALTOR®, REALTORS®) and/or the quality of services they provide (MLS®, Multiple Listing Service®)

Listing information last updated on June 16th, 2025 at 10:17pm MDT