

## \$325,000 - 5 Wellington Crescent, Spruce Grove

MLS® #E4436007

**\$325,000**

3 Bedroom, 1.50 Bathroom, 1,126 sqft  
Single Family on 0.00 Acres

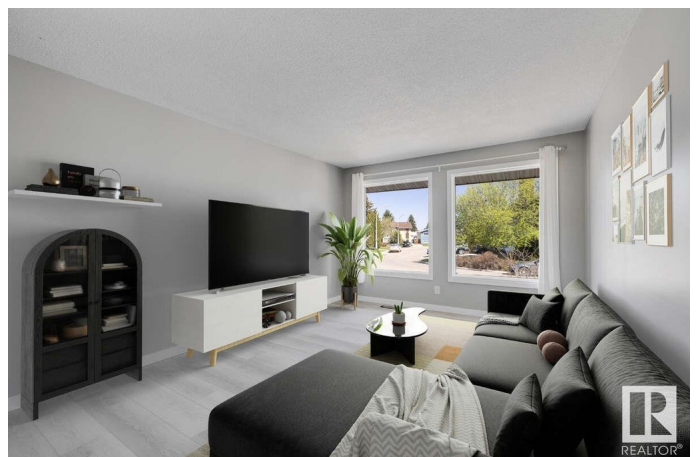
Woodhaven\_SPGR, Spruce Grove, AB

For more information, please click on "View Listing on Realtor Website". This stunning gem in a quiet, family-oriented community, features luxurious renovations - quartz countertops, vinyl plank flooring, contemporary cabinets (with the soft close feature) and modern finishes ALL THROUGHOUT THE HOME!!! THE ENTIRE HOME HAS BEEN COMPLETELY UPGRADED! Enjoy ALL NEW KITCHEN APPLIANCES, a bright, spacious living room, and a half-bath on the main floor! Upstairs you'll find 3 comfortable bedrooms & a full bath that boasts elegant fixtures. The fully finished basement offers acoustic ceiling panels and soft LED lighting for a warm and cozy feel and plenty of open space. Further, you will appreciate your private entry into the garage equipped with a new insulated door & automatic door opener and fruit bearing trees in the backyard. Located close to top-rated schools and array of amenities including, recreational facilities, parks and restaurants. Donâ€™t miss the chance to make this incredible home yours!

Built in 1978

### Essential Information

MLS® #	E4436007
Price	\$325,000



Bedrooms	3
Bathrooms	1.50
Full Baths	1
Half Baths	1
Square Footage	1,126
Acres	0.00
Year Built	1978
Type	Single Family
Sub-Type	Half Duplex
Style	2 Storey
Status	Active

### Community Information

Address	5 Wellington Crescent
Area	Spruce Grove
Subdivision	Woodhaven_SPGR
City	Spruce Grove
County	ALBERTA
Province	AB
Postal Code	T7X 1K6

### Amenities

Amenities	Deck, Hot Water Natural Gas, Hot Wtr Tank-Energy Star, No Smoking Home, Parking-Plug-Ins, Patio, Smart/Program. Thermostat, Recreation Room/Centre
Parking Spaces	2
Parking	Front Drive Access, Heated, Insulated, Parking Pad Cement/Paved, Single Garage Attached, Single Indoor

### Interior

Appliances	Dishwasher - Energy Star, Dishwasher-Built-In, Dryer, Garage Control, Garage Opener, Microwave Hood Fan, Refrigerator-Energy Star, Storage Shed, Stove-Electric, Washer - Energy Star, Window Coverings, Refrigerators-Two
Heating	Forced Air-1, Natural Gas
Stories	2
Has Basement	Yes
Basement	Full, Finished

### Exterior

Exterior	Wood, Asphalt, Metal
Exterior Features	Fruit Trees/Shrubs, Level Land, Low Maintenance Landscape, Not Fenced, Playground Nearby, Public Transportation, Schools, Shopping Nearby, Treed Lot
Roof	Asphalt Shingles
Construction	Wood, Asphalt, Metal
Foundation	Concrete Perimeter

**School Information**

Elementary	Rockwood
Middle	Woodhaven Middle
High	Spruce Grove Composite

**Additional Information**

Date Listed	May 12th, 2025
Days on Market	3
Zoning	Zone 91

DATA IS DEEMED RELIABLE BUT IS NOT GUARANTEED ACCURATE BY THE REALTORS® ASSOCIATION OF EDMONTON. COPYRIGHT 2025 BY THE REALTORS® ASSOCIATION OF EDMONTON. ALL RIGHTS RESERVED.Trademarks are owned or controlled by the Canadian Real Estate Association (CREA) and identify real estate professionals who are members of CREA (REALTOR®, REALTORS®) and/or the quality of services they provide (MLS®, Multiple Listing Service®)

Listing information last updated on May 15th, 2025 at 5:32am MDT