

\$680,000 - 4842 172a Avenue, Edmonton

MLS® #E4435138

\$680,000

4 Bedroom, 3.50 Bathroom, 2,284 sqft

Single Family on 0.00 Acres

Cy Becker, Edmonton, AB

This 4-bedroom, 3.5 bathroom beauty offers almost 2300 sq.ft. of beautifully finished living space, including a fully developed basement by the builder. Nestled on a spacious pie-shaped lot, this home backs onto a peaceful open field - no houses behind, just west-facing, unobstructed views. The main floor features a bright and open layout with a flex space, perfect for a home office or play room. The kitchen is equipped with granite countertops, an extra deep silgranite sink, a walk-through pantry and plenty of counter space. Upstairs, you'll find the primary suite with a spa-like ensuite, as well as two other generous-sized bedrooms, and a bonus room. The basement boasts another family room, bedroom, and full bathroom. Stay comfortable year-round with central air-conditioning, and enjoy the convenience of an oversized, attached garage. The landscaped yard is ideal for entertaining, kids or pets, offering space and privacy rarely found in the city. This is the perfect family home for you - don't miss out!

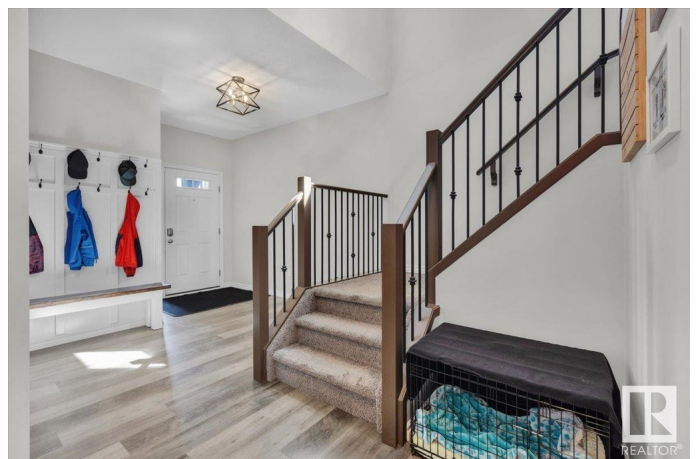
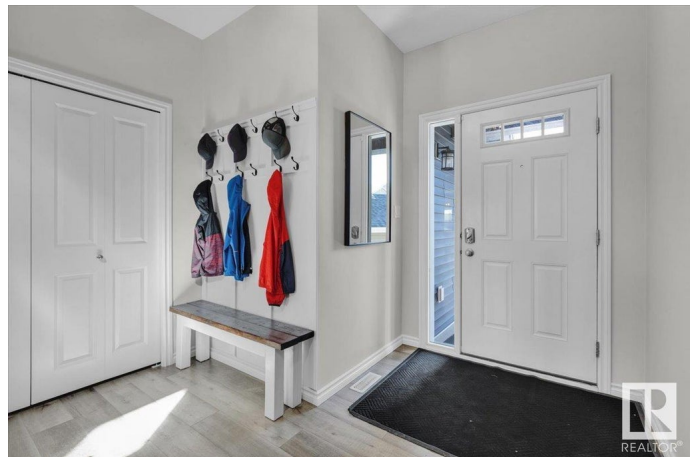
Built in 2019

Essential Information

MLS® # E4435138

Price \$680,000

Bedrooms 4



Bathrooms	3.50
Full Baths	3
Half Baths	1
Square Footage	2,284
Acres	0.00
Year Built	2019
Type	Single Family
Sub-Type	Detached Single Family
Style	2 Storey
Status	Active

Community Information

Address	4842 172a Avenue
Area	Edmonton
Subdivision	Cy Becker
City	Edmonton
County	ALBERTA
Province	AB
Postal Code	T5Y 3V8

Amenities

Amenities	Air Conditioner, Ceiling 9 ft., Deck, Exterior Walls- 2"x6", Hot Water Natural Gas, No Smoking Home, Smart/Program. Thermostat, Vinyl Windows, HRV System
Parking	Double Garage Attached

Interior

Interior Features	ensuite bathroom
Appliances	Air Conditioning-Central, Dishwasher-Built-In, Dryer, Microwave Hood Fan, Refrigerator, Stove-Electric, Washer
Heating	Forced Air-1, Natural Gas
Fireplace	Yes
Fireplaces	Mantel, Stone Facing
Stories	3
Has Basement	Yes
Basement	Full, Finished

Exterior

Exterior	Wood, Vinyl
----------	-------------

Exterior Features	Backs Onto Park/Trees, Cul-De-Sac, Fenced, Landscaped, No Back Lane, Public Transportation, Shopping Nearby, Treed Lot
Roof	Asphalt Shingles
Construction	Wood, Vinyl
Foundation	Concrete Perimeter

School Information

Elementary	Belvedere School
Middle	Steele Heights
High	M.E. Lazerte

Additional Information

Date Listed	May 8th, 2025
Days on Market	2
Zoning	Zone 03

DATA IS DEEMED RELIABLE BUT IS NOT GUARANTEED ACCURATE BY THE REALTORS® ASSOCIATION OF EDMONTON. COPYRIGHT 2025 BY THE REALTORS® ASSOCIATION OF EDMONTON. ALL RIGHTS RESERVED. Trademarks are owned or controlled by the Canadian Real Estate Association (CREA) and identify real estate professionals who are members of CREA (REALTOR®, REALTORS®) and/or the quality of services they provide (MLS®, Multiple Listing Service®)

Listing information last updated on May 9th, 2025 at 10:17pm MDT