

## \$189,900 - 14155 26 Street, Edmonton

MLS® #E4434952

**\$189,900**

3 Bedroom, 1.50 Bathroom, 1,327 sqft

Condo / Townhouse on 0.00 Acres

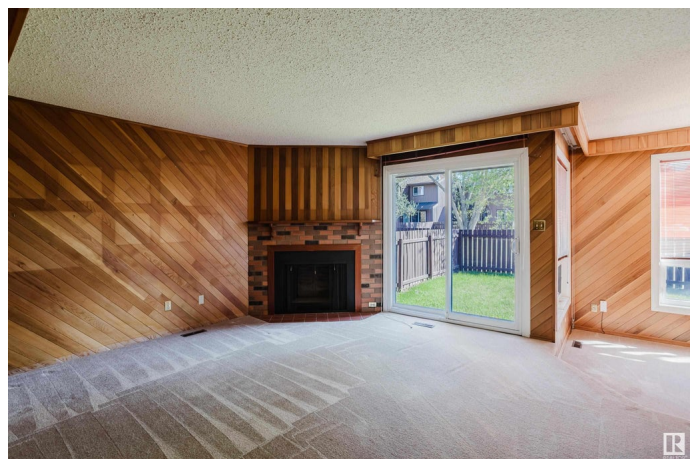
Bannerman, Edmonton, AB

AMAZING property for first time homeowners or as an investment! Three bedroom, 2-storey townhouse with attached single garage in the Northeast that backs onto a green space! Enjoy the privacy of an END UNIT, with only one neighbor. Step inside to a spacious living area that is open and bright, and highlighted by a decorative fireplace. Kitchen features plenty of cupboard space, perfect to unleash your culinary skills. Elegant, sunken dining area that looks onto the backyard is perfect for entertaining family and friends. Upstairs features 3 generous bedrooms, including a primary with ample closet space, and 4-piece main bathroom. Large windows offers ample amount of natural light. Basement features a laundry area, flex space and storage area. The South facing backyard is ideal for kids and pets. This is a perfect home for a young family. Amazing convenience, as it is close to everything. Victoria Trail and the Yellowhead, schools, parks, shopping and entertainment.

Built in 1979

### Essential Information

MLS® #	E4434952
Price	\$189,900
Bedrooms	3
Bathrooms	1.50



Full Baths	1
Half Baths	1
Square Footage	1,327
Acres	0.00
Year Built	1979
Type	Condo / Townhouse
Sub-Type	Townhouse
Style	2 Storey
Status	Active

### Community Information

Address	14155 26 Street
Area	Edmonton
Subdivision	Bannerman
City	Edmonton
County	ALBERTA
Province	AB
Postal Code	T5Y 1S2

### Amenities

Amenities	Parking-Visitor, See Remarks
Parking	Single Garage Attached

### Interior

Appliances	Dishwasher-Built-In, Dryer, Microwave Hood Fan, Refrigerator, Stove-Electric, Washer, Window Coverings
Heating	Forced Air-1, Natural Gas
Fireplace	Yes
Fireplaces	Brick Facing
Stories	2
Has Basement	Yes
Basement	Full, Partially Finished

### Exterior

Exterior	Wood
Exterior Features	Fenced, Flat Site, Playground Nearby, Public Transportation, Schools, Shopping Nearby
Roof	Asphalt Shingles
Construction	Wood

Foundation                      Concrete Perimeter

**Additional Information**

Date Listed                      May 7th, 2025  
Days on Market                3  
Zoning                              Zone 35  
Condo Fee                        \$550

DATA IS DEEMED RELIABLE BUT IS NOT GUARANTEED ACCURATE BY THE REALTORS® ASSOCIATION OF EDMONTON. COPYRIGHT 2025 BY THE REALTORS® ASSOCIATION OF EDMONTON. ALL RIGHTS RESERVED.Trademarks are owned or controlled by the Canadian Real Estate Association (CREA) and identify real estate professionals who are members of CREA (REALTOR®, REALTORS®) and/or the quality of services they provide (MLS®, Multiple Listing Service®)  
Listing information last updated on May 10th, 2025 at 3:17am MDT