

\$559,900 - 15 Melrose Crescent, Sherwood Park

MLS® #E4434510

\$559,900

4 Bedroom, 2.50 Bathroom, 1,821 sqft

Single Family on 0.00 Acres

Mills Haven, Sherwood Park, AB

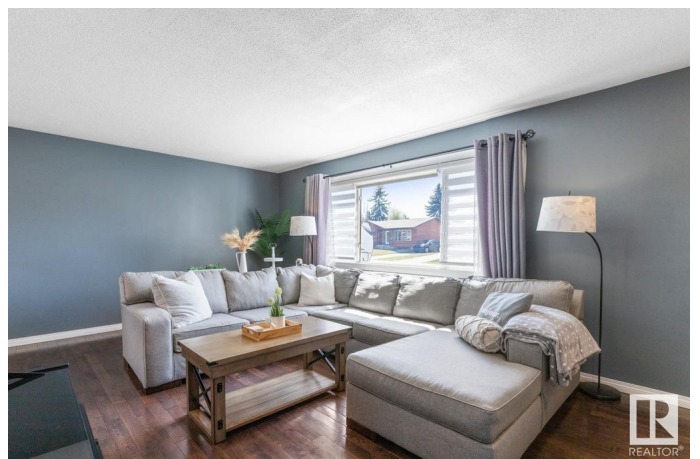
Look no further than this beautifully UPDATED home, tucked on to a quiet street in the desirable neighbourhood of Mills Haven, featuring OVERSIZED 29x24 HEATED garage, 4 bedrooms & 2.5 baths. You are welcomed in to find a spacious entry that opens to a family sized living room with newer picture window complete with solar sun shade. Hardwood flooring leads to the kitchen the offers plenty of cabinets, pantry & island that looks over the dining area. Awesome mud room complements the functional main level. Upstairs you will find a king sized primary suite with WI closet, ensuite with jacuzzi tub plus access to the private patio. 3 more bedrooms are generous in size & 4pc UPDATED bath complete the upper levels. Moving down to the lower level, you will LOVE the rec room with cozy fireplace, bathroom & tons of storage. NEW ROOF (2024), NEWER WINDOWS & HE FURNACE. Enjoy the fenced & landscaped yard with entertaining sized deck with hot tub, surrounded my mature trees, all steps away from schools & parks.

Built in 1975

Essential Information

MLS® # E4434510

Price \$559,900



Bedrooms	4
Bathrooms	2.50
Full Baths	2
Half Baths	1
Square Footage	1,821
Acres	0.00
Year Built	1975
Type	Single Family
Sub-Type	Detached Single Family
Style	4 Level Split
Status	Active

Community Information

Address	15 Melrose Crescent
Area	Sherwood Park
Subdivision	Mills Haven
City	Sherwood Park
County	ALBERTA
Province	AB
Postal Code	T8A 3T9

Amenities

Amenities	Deck, Hot Tub, Vinyl Windows, See Remarks
Parking	Double Garage Detached, Heated, Over Sized

Interior

Interior Features	ensuite bathroom
Appliances	Dishwasher-Built-In, Garage Opener, Garburator, Microwave Hood Fan, Refrigerator, Storage Shed, Stove-Electric, Window Coverings, Garage Heater, Hot Tub
Heating	Forced Air-1, Natural Gas
Fireplace	Yes
Fireplaces	Wall Mount
Stories	4
Has Basement	Yes
Basement	Full, Finished

Exterior

Exterior	Wood, Vinyl
----------	-------------

Exterior Features	Fenced, Landscaped, Playground Nearby, Private Setting, Public Transportation, Schools, Shopping Nearby, See Remarks
Roof	Asphalt Shingles
Construction	Wood, Vinyl
Foundation	Concrete Perimeter

School Information

Elementary	MILLS HAVEN
Middle	CLOVER BAR JR
High	SALISBURY COMP

Additional Information

Date Listed	May 5th, 2025
Days on Market	10
Zoning	Zone 25

DATA IS DEEMED RELIABLE BUT IS NOT GUARANTEED ACCURATE BY THE REALTORS® ASSOCIATION OF EDMONTON. COPYRIGHT 2025 BY THE REALTORS® ASSOCIATION OF EDMONTON. ALL RIGHTS RESERVED.Trademarks are owned or controlled by the Canadian Real Estate Association (CREA) and identify real estate professionals who are members of CREA (REALTOR®, REALTORS®) and/or the quality of services they provide (MLS®, Multiple Listing Service®)

Listing information last updated on May 15th, 2025 at 12:02am MDT