

\$589,500 - 39 Manchester Drive, Sherwood Park

MLS® #E4434432

\$589,500

3 Bedroom, 3.00 Bathroom, 1,432 sqft

Single Family on 0.00 Acres

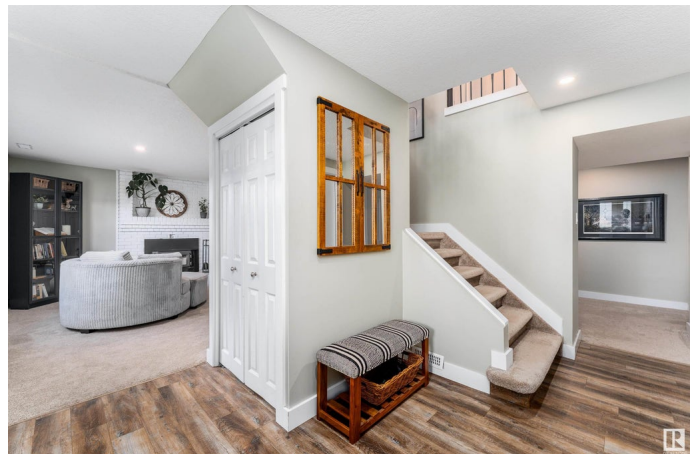
Mills Haven, Sherwood Park, AB

Beautifully renovated reverse walkout bungalow backing onto Broadmoor Golf Course! This 1,431 sq ft home offers 3 sizeable bedrooms on the main floor, including a spacious primary suite with a recently updated 3-piece ensuite. Enjoy rich hardwood flooring throughout, a second fully updated 4-piece bathroom, and a warm, inviting kitchen with rich wood cabinetry, granite counter tops, stainless steel appliances, and a gas stove. The fully finished basement features brand new carpet, a 3-piece bathroom, laundry area, garage access, and a versatile den that could easily serve as a fourth bedroom or home office. Step outside to your private backyard oasis—complete with a large deck, hot tub, and lush green space, perfect for entertaining or relaxing in total privacy. This rare find offers comfort, style, and one of the most desirable backdrops in Sherwood Park.

Built in 1973

Essential Information

MLS® #	E4434432
Price	\$589,500
Bedrooms	3
Bathrooms	3.00
Full Baths	3
Square Footage	1,432



Acres	0.00
Year Built	1973
Type	Single Family
Sub-Type	Detached Single Family
Style	Hillside Bungalow
Status	Active

Community Information

Address	39 Manchester Drive
Area	Sherwood Park
Subdivision	Mills Haven
City	Sherwood Park
County	ALBERTA
Province	AB
Postal Code	T8A 0T3

Amenities

Amenities	Deck, Fire Pit, Hot Tub, Parking-Extra, Vinyl Windows
Parking	Single Garage Attached

Interior

Interior Features	ensuite bathroom
Appliances	Dishwasher-Built-In, Dryer, Freezer, Garage Control, Garage Opener, Hood Fan, Refrigerator, Storage Shed, Stove-Gas, Vacuum System Attachments, Vacuum Systems, Washer, Window Coverings, Hot Tub
Heating	Forced Air-1, Natural Gas
Stories	2
Has Basement	Yes
Basement	Full, Finished

Exterior

Exterior	Wood, Stone, Vinyl
Exterior Features	Backs Onto Park/Trees, Fenced, Golf Nearby, Hillside, Landscaped, Private Setting, Schools, Shopping Nearby, See Remarks
Roof	Asphalt Shingles
Construction	Wood, Stone, Vinyl
Foundation	Concrete Perimeter

Additional Information

Date Listed	May 4th, 2025
-------------	---------------

Days on Market 9

Zoning Zone 25

DATA IS DEEMED RELIABLE BUT IS NOT GUARANTEED ACCURATE BY THE REALTORS® ASSOCIATION OF EDMONTON. COPYRIGHT 2025 BY THE REALTORS® ASSOCIATION OF EDMONTON. ALL RIGHTS RESERVED. Trademarks are owned or controlled by the Canadian Real Estate Association (CREA) and identify real estate professionals who are members of CREA (REALTOR®, REALTORS®) and/or the quality of services they provide (MLS®, Multiple Listing Service®)

Listing information last updated on May 14th, 2025 at 4:32am MDT