

## \$599,900 - 2040 210 St, Edmonton

MLS® #E4433986

**\$599,900**

5 Bedroom, 4.00 Bathroom, 1,906 sqft

Single Family on 0.00 Acres

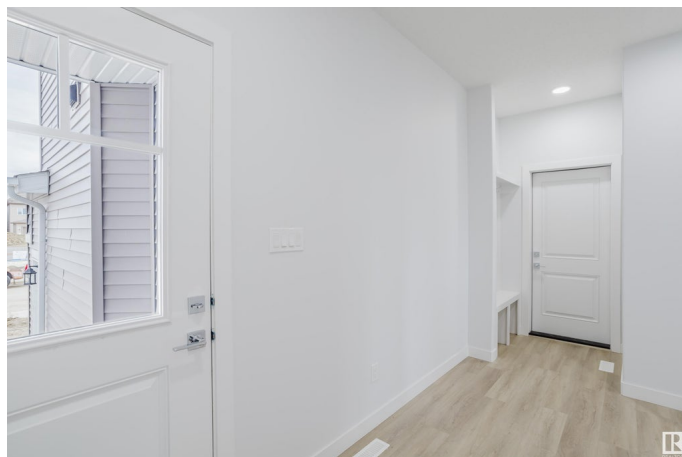
Stillwater, Edmonton, AB

BRAND NEW HOME IN VERGE, STILLWATER! LEGAL 2 BEDROOM BASEMENT SUITE with Private Side Entrance! This home features 9ft Ceilings & an Open concept floor plan. The stylized Living / Dining Area has an Ultra Modern Fireplace and In-Style Vinyl Plank Flooring. The modern two tone kitchen comes complete with ample storage and a large island with a white quartz countertop! Upstairs you'll find 3 LARGE bedrooms including a luxurious primary bedroom with a walk-in closet and ensuite, spacious laundry with a sink and a versatile bonus room. The 2 Bedroom Basement Suite features its own laundry and a full sized kitchen.

Built in 2025

### Essential Information

MLS® #	E4433986
Price	\$599,900
Bedrooms	5
Bathrooms	4.00
Full Baths	4
Square Footage	1,906
Acres	0.00
Year Built	2025
Type	Single Family



Sub-Type	Detached Single Family
Style	2 Storey
Status	Active

### Community Information

Address	2040 210 St
Area	Edmonton
Subdivision	Stillwater
City	Edmonton
County	ALBERTA
Province	AB
Postal Code	T6M 3H6

### Amenities

Amenities	Ceiling 9 ft., Detectors Smoke, Exterior Walls- 2"x6", Hot Water Tankless, No Animal Home, No Smoking Home, Vinyl Windows, Natural Gas Stove Hookup
Parking	Double Garage Attached

### Interior

Interior Features	ensuite bathroom
Appliances	Garage Control, Garage Opener, Hood Fan
Heating	Forced Air-2, Natural Gas
Fireplace	Yes
Fireplaces	Remote Control
Stories	3
Has Suite	Yes
Has Basement	Yes
Basement	Full, Finished

### Exterior

Exterior	Wood, Stone, Vinyl
Exterior Features	Playground Nearby, Public Transportation, Schools, Shopping Nearby
Roof	Asphalt Shingles
Construction	Wood, Stone, Vinyl
Foundation	Concrete Perimeter

### Additional Information

Date Listed	May 1st, 2025
-------------	---------------

Days on Market 5

Zoning Zone 57

DATA IS DEEMED RELIABLE BUT IS NOT GUARANTEED ACCURATE BY THE REALTORS® ASSOCIATION OF EDMONTON. COPYRIGHT 2025 BY THE REALTORS® ASSOCIATION OF EDMONTON. ALL RIGHTS RESERVED. Trademarks are owned or controlled by the Canadian Real Estate Association (CREA) and identify real estate professionals who are members of CREA (REALTOR®, REALTORS®) and/or the quality of services they provide (MLS®, Multiple Listing Service®)

Listing information last updated on May 6th, 2025 at 11:47am MDT