

## \$617,500 - 102 Juneau Way, St. Albert

MLS® #E4433746

**\$617,500**

4 Bedroom, 3.50 Bathroom, 1,647 sqft

Single Family on 0.00 Acres

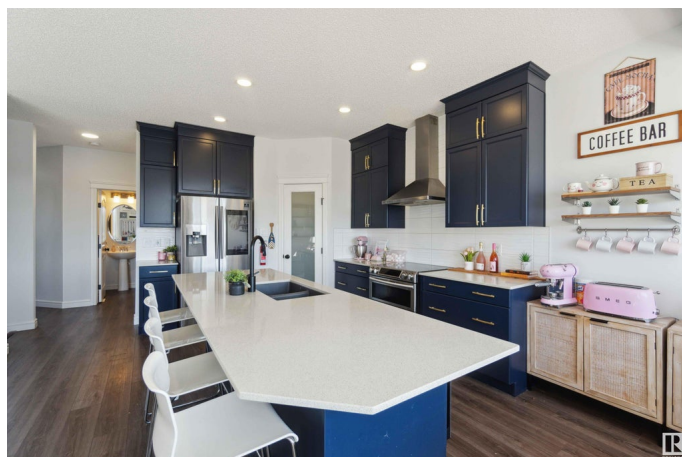
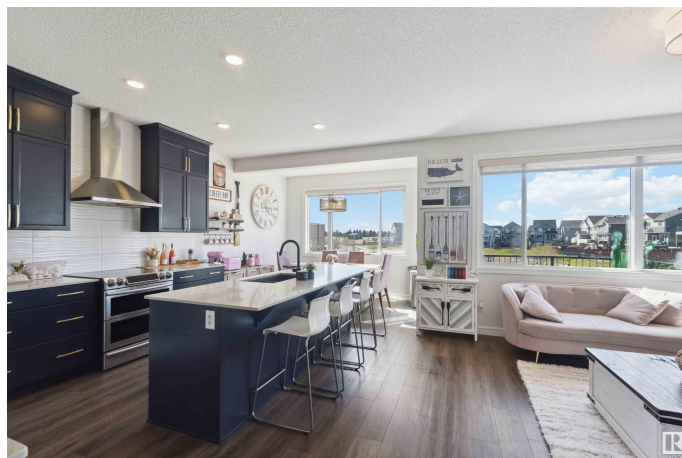
Jensen Lakes, St. Albert, AB

Welcome to your dream home in the sought-after community of Jensen Lakes – St. Albert's only lake community! This stunning 3-bedroom, 3-bath property offers over 2,300 sq ft of total living space, thoughtfully designed for modern living. Step inside to soaring 9 ft ceilings and admire the top-of-the-line royal blue cabinets that bring a touch of luxury and personality to the heart of the home. With 1,650 sq ft above grade, plus a fully finished walkout basement, you'll enjoy spacious areas for family and entertaining, including a cozy recreation room and an airy loft. The walkout leads directly to your backyard, where you'll find peaceful, scenic views as the property backs onto a tranquil pond – providing both beauty and privacy. Best of all, enjoy exclusive access to Jensen Lakes, offering beach days and year-round activities right in your neighborhood. This is lakeside living at its finest!

Built in 2019

### Essential Information

MLS® #	E4433746
Price	\$617,500
Bedrooms	4
Bathrooms	3.50
Full Baths	3



Half Baths	1
Square Footage	1,647
Acres	0.00
Year Built	2019
Type	Single Family
Sub-Type	Half Duplex
Style	2 Storey
Status	Active

### Community Information

Address	102 Juneau Way
Area	St. Albert
Subdivision	Jensen Lakes
City	St. Albert
County	ALBERTA
Province	AB
Postal Code	T8N 7V6

### Amenities

Amenities	Air Conditioner, Bar, Ceiling 9 ft., Deck, Fire Pit, Hot Water Natural Gas, Lake Privileges, No Animal Home, No Smoking Home, Patio, Vaulted Ceiling, Walkout Basement, HRV System
Parking	Double Garage Attached

### Interior

Interior Features	ensuite bathroom
Appliances	Dishwasher-Built-In, Dryer, Oven-Microwave, Refrigerator, Stove-Electric, Washer, Wine/Beverage Cooler
Heating	Forced Air-1, Natural Gas
Stories	2
Has Basement	Yes
Basement	Full, Finished

### Exterior

Exterior	Wood, Vinyl
Exterior Features	Playground Nearby, Public Transportation, Schools, Shopping Nearby
Roof	Asphalt Shingles
Construction	Wood, Vinyl
Foundation	Concrete Perimeter

**Additional Information**

Date Listed	May 1st, 2025
Days on Market	14
Zoning	Zone 24
HOA Fees	538.96
HOA Fees Freq.	Annually

DATA IS DEEMED RELIABLE BUT IS NOT GUARANTEED ACCURATE BY THE REALTORS® ASSOCIATION OF EDMONTON. COPYRIGHT 2025 BY THE REALTORS® ASSOCIATION OF EDMONTON. ALL RIGHTS RESERVED.Trademarks are owned or controlled by the Canadian Real Estate Association (CREA) and identify real estate professionals who are members of CREA (REALTOR®, REALTORS®) and/or the quality of services they provide (MLS®, Multiple Listing Service®)

Listing information last updated on May 15th, 2025 at 3:17pm MDT