

\$224,702 - 11 Willowdale Place, Edmonton

MLS® #E4433179

\$224,702

3 Bedroom, 1.50 Bathroom, 991 sqft

Condo / Townhouse on 0.00 Acres

Ormsby Place, Edmonton, AB

END UNIT....NEWER FLOORING.....NEWER KITCHEN.....BASEMENT JUST NEED SOME CARPET.....CUTE YARD....THIS IS A LIFESTYLE PROPERTY.... OWN CHEAPER THAN RENT!... ~!WELCOME HOME!~

Tucked just off the main blvd, This end unit townhouse is sure to impress. The yard is west facing/inviting...Front entrance invites you in.!

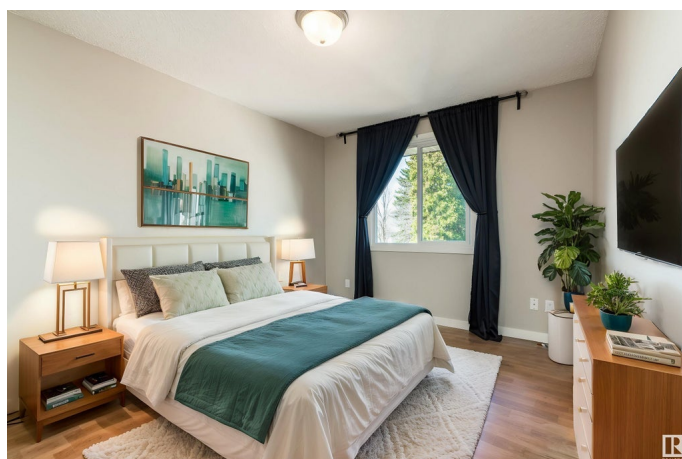
On your left is the cute kitchen, clean white cabinets, and function in design. Adjoining dinette has lots of natural light coming through.!

On the right the living room is generous in size and also flooded with sun light. Upstairs has 3 bedrooms a full bathroom.... LETS NOT FORGET THE LUXURY VYNIL FLOORING WAS INSTALLED EVERYWHERE... up and down. Basement is partially finished, laundry and plenty of storage... easy access to west edmonton, the Anthony Henday and more... complex is very well run !>

Built in 1976

Essential Information

MLS® #	E4433179
Price	\$224,702
Bedrooms	3
Bathrooms	1.50
Full Baths	1



Half Baths	1
Square Footage	991
Acres	0.00
Year Built	1976
Type	Condo / Townhouse
Sub-Type	Townhouse
Style	2 Storey
Status	Active

Community Information

Address	11 Willowdale Place
Area	Edmonton
Subdivision	Ormsby Place
City	Edmonton
County	ALBERTA
Province	AB
Postal Code	T5T 1Z4

Amenities

Amenities	Patio, See Remarks
Parking	Stall

Interior

Appliances	Dishwasher-Built-In, Dryer, Microwave Hood Fan, Refrigerator, Stove-Electric, Washer
Heating	Forced Air-1, Natural Gas
Stories	3
Has Basement	Yes
Basement	Full, Finished

Exterior

Exterior	Wood, Stucco
Exterior Features	Flat Site, Landscaped, Playground Nearby, Public Transportation, Schools, Shopping Nearby, See Remarks
Roof	Asphalt Shingles
Construction	Wood, Stucco
Foundation	Concrete Perimeter

Additional Information

Date Listed	April 28th, 2025
Days on Market	2
Zoning	Zone 20
Condo Fee	\$414

DATA IS DEEMED RELIABLE BUT IS NOT GUARANTEED ACCURATE BY THE REALTORS® ASSOCIATION OF EDMONTON. COPYRIGHT 2025 BY THE REALTORS® ASSOCIATION OF EDMONTON. ALL RIGHTS RESERVED. Trademarks are owned or controlled by the Canadian Real Estate Association (CREA) and identify real estate professionals who are members of CREA (REALTOR®, REALTORS®) and/or the quality of services they provide (MLS®, Multiple Listing Service®)

Listing information last updated on April 30th, 2025 at 7:17am MDT