

\$229,900 - 301 5102 49 Avenue, Leduc

MLS® #E4433141

\$229,900

2 Bedroom, 2.00 Bathroom, 860 sqft

Condo / Townhouse on 0.00 Acres

Linsford Park, Leduc, AB

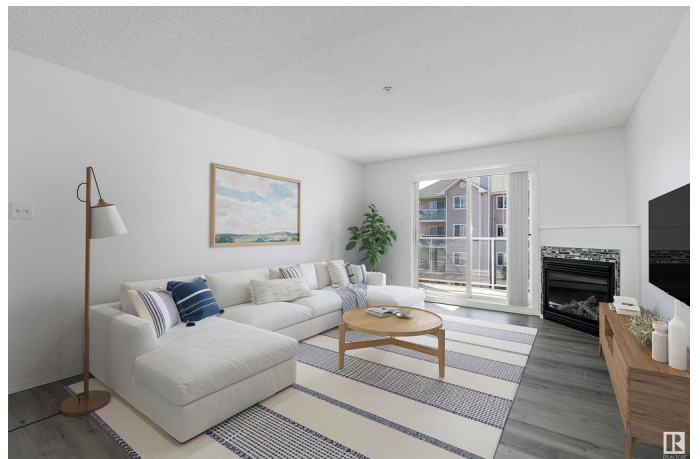
Welcome to Majestic Place East – a centrally located & highly sought-after 40+ condo in the heart of Leduc. This beautifully maintained home features an open-concept floor plan with a spacious kitchen equipped with newer appliances, & a generous living room centered around a cozy corner gas fireplace. The unit offers 2 large bedrooms, including a primary suite complete with a walk-through closet & a private 3-pc ensuite. An additional 4-pc bathroom is conveniently located off the main living area. Enjoy the ease of in-suite laundry with ample storage space, & relax outdoors on your private patio. Additional features include a titled parking stall & an assigned storage locker. Recent updates include new flooring, fresh paint, & updated door hardware. Condo fees cover heat, water, & sewer, adding even more value to this move-in-ready home. Located in one of Leduc’s most popular communities, Majestic Place East offers the perfect blend of comfort, convenience, & lifestyle. Some photos may be virtually staged

Built in 2000

Essential Information

MLS® # E4433141

Price \$229,900



Bedrooms	2
Bathrooms	2.00
Full Baths	2
Square Footage	860
Acres	0.00
Year Built	2000
Type	Condo / Townhouse
Sub-Type	Lowrise Apartment
Style	Single Level Apartment
Status	Active

Community Information

Address	301 5102 49 Avenue
Area	Leduc
Subdivision	Linsford Park
City	Leduc
County	ALBERTA
Province	AB
Postal Code	T9E 8H1

Amenities

Amenities	Parking-Visitor, Patio, See Remarks
Parking	Heated, Parkade

Interior

Interior Features	ensuite bathroom
Appliances	Dishwasher-Built-In, Dryer, Refrigerator, Stove-Electric, Washer, Window Coverings
Heating	Baseboard, Natural Gas
Fireplace	Yes
Fireplaces	Mantel
# of Stories	4
Stories	1
Has Basement	Yes
Basement	None, No Basement

Exterior

Exterior	Wood, Stucco, Vinyl
Exterior Features	Airport Nearby, Golf Nearby, Playground Nearby, Shopping Nearby

Roof	Asphalt Shingles
Construction	Wood, Stucco, Vinyl
Foundation	Concrete Perimeter

Additional Information

Date Listed	April 28th, 2025
Days on Market	49
Zoning	Zone 81
Condo Fee	\$487

DATA IS DEEMED RELIABLE BUT IS NOT GUARANTEED ACCURATE BY THE REALTORS® ASSOCIATION OF EDMONTON. COPYRIGHT 2025 BY THE REALTORS® ASSOCIATION OF EDMONTON. ALL RIGHTS RESERVED.Trademarks are owned or controlled by the Canadian Real Estate Association (CREA) and identify real estate professionals who are members of CREA (REALTOR®, REALTORS®) and/or the quality of services they provide (MLS®, Multiple Listing Service®)

Listing information last updated on June 16th, 2025 at 4:32pm MDT