

# \$265,000 - 129 6220 Fulton Road, Edmonton

MLS® #E4433025

**\$265,000**

2 Bedroom, 2.00 Bathroom, 1,105 sqft  
Condo / Townhouse on 0.00 Acres

Fulton Place, Edmonton, AB

This 2 Bed/2Bath condo is located on the Main Floor and is ready for immediate possession. Quick and easy access to All the major roads and is located close to Downtown, Shopping and the River Valley. Fulton Court is a Smoke Free Complex and offers 40+ Living. Heated & Secure Underground Parking with a Carwash, Workshop, Exercise Room, Library, Social Room & Storage Unit. Convenient access to your Condo via Your Patio Entrance as well as lots of Street Parking.

Built in 1992

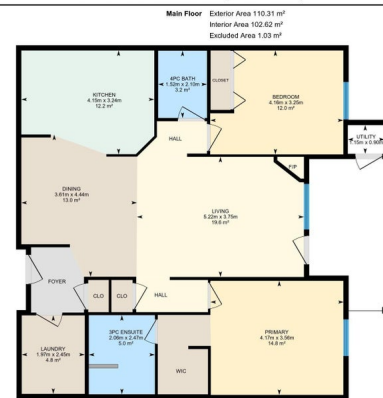
## Essential Information

MLS® #	E4433025
Price	\$265,000
Bedrooms	2
Bathrooms	2.00
Full Baths	2
Square Footage	1,105
Acres	0.00
Year Built	1992
Type	Condo / Townhouse
Sub-Type	Lowrise Apartment
Style	Single Level Apartment
Status	Active

## Community Information



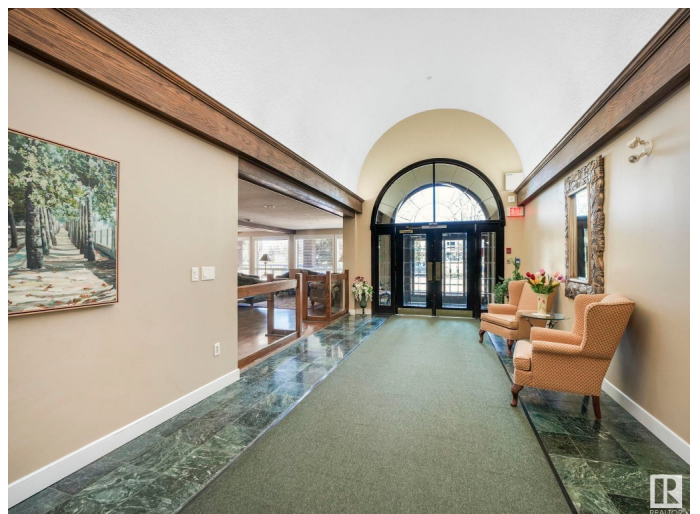
129-6220 Fulton Rd NW, Edmonton, AB



0 1 2 m

PREPARED: 20250426

White regions are excluded from total floor area in GUIDE floor plans. All room dimensions and floor areas must be considered approximate and are subject to independent verification.



Address	129 6220 Fulton Road
Area	Edmonton
Subdivision	Fulton Place
City	Edmonton
County	ALBERTA
Province	AB
Postal Code	T6A 3T4

### **Amenities**

Amenities	Air Conditioner, Car Wash, Detectors Smoke, Exercise Room, Intercom, No Animal Home, No Smoking Home, Parking-Extra, Parking-Visitor, Party Room, Patio, Secured Parking, Security Door, Social Rooms, Sprinkler System-Fire, Television Connection, Storage Cage
Parking	Heated, Parkade, Underground

### **Interior**

Interior Features	ensuite bathroom
Appliances	Air Conditioning-Central, Dishwasher-Built-In, Dryer, Refrigerator, Stove-Electric, Washer
Heating	Forced Air-1, Natural Gas
Fireplace	Yes
Fireplaces	Corner
# of Stories	3
Stories	1
Has Basement	Yes
Basement	None, No Basement

### **Exterior**

Exterior	Wood, Brick, Vinyl
Exterior Features	Fruit Trees/Shrubs, Golf Nearby, Landscaped, Playground Nearby, Public Swimming Pool, Public Transportation, Shopping Nearby
Roof	Asphalt Shingles
Construction	Wood, Brick, Vinyl
Foundation	Concrete Perimeter

### **Additional Information**

Date Listed	April 26th, 2025
Days on Market	4
Zoning	Zone 19
Condo Fee	\$594

DATA IS DEEMED RELIABLE BUT IS NOT GUARANTEED ACCURATE BY THE REALTORS® ASSOCIATION OF EDMONTON. COPYRIGHT 2025 BY THE REALTORS® ASSOCIATION OF EDMONTON. ALL RIGHTS RESERVED. Trademarks are owned or controlled by the Canadian Real Estate Association (CREA) and identify real estate professionals who are members of CREA (REALTOR®, REALTORS®) and/or the quality of services they provide (MLS®, Multiple Listing Service®)

Listing information last updated on April 30th, 2025 at 9:32am MDT