

## \$619,900 - 5399 Lark Landing Landing, Edmonton

MLS® #E4431967

**\$619,900**

3 Bedroom, 2.50 Bathroom, 2,074 sqft

Single Family on 0.00 Acres

Kinglet Gardens, Edmonton, AB

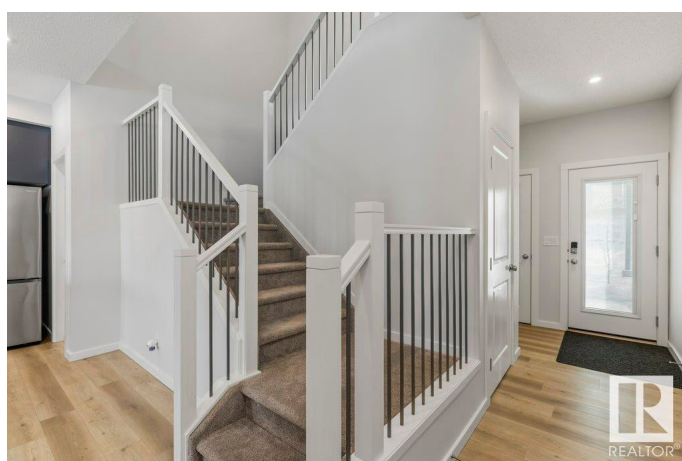
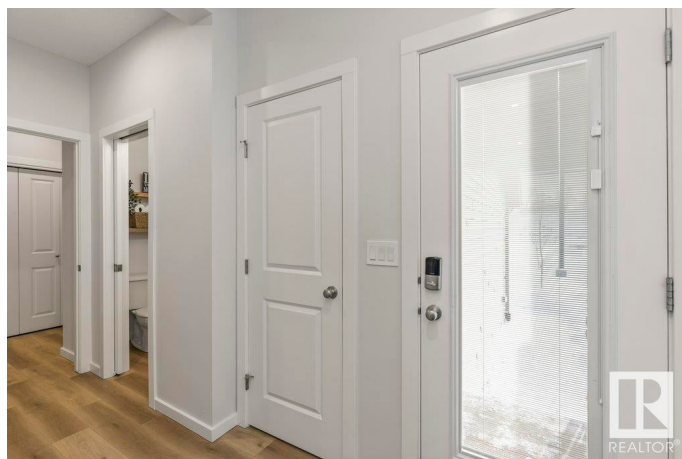
This immaculate 2074 sq. ft. two-storey home offers the perfect blend of elegance and functionality. Nestled on a serene POND, it features a WALKOUT BASEMENT that provides stunning views and direct outdoor access. The main floor is highlighted by sleek VINYL PLANK flooring and an open-concept layout designed for entertaining and everyday living. The kitchen boasts UPGRADED APPLIANCES, a spacious ISLAND, modern backsplash, QUARTZ COUNTERTOPS and a WALK-THROUGH PANTRY. The great room features a cozy ELECTRIC FIREPLACE and large windows framing the picturesque pond views. Upstairs, you'll find 3 generously sized bedrooms, including a luxurious primary suite with a private ensuite and walk-in closet. A bright BONUS ROOM and convenient SECOND-FLOOR LAUNDRY complete this level. Nestled in a prime pond-side location, this home offers a serene retreat while remaining close to all amenities. Enjoy the peaceful pond views or unwind in the elegant interior—this property perfectly balances comfort and style!

Built in 2023

### Essential Information

MLS® # E4431967

Price \$619,900



|                |                        |
|----------------|------------------------|
| Bedrooms       | 3                      |
| Bathrooms      | 2.50                   |
| Full Baths     | 2                      |
| Half Baths     | 1                      |
| Square Footage | 2,074                  |
| Acres          | 0.00                   |
| Year Built     | 2023                   |
| Type           | Single Family          |
| Sub-Type       | Detached Single Family |
| Style          | 2 Storey               |
| Status         | Active                 |

### Community Information

|             |                           |
|-------------|---------------------------|
| Address     | 5399 Lark Landing Landing |
| Area        | Edmonton                  |
| Subdivision | Kinglet Gardens           |
| City        | Edmonton                  |
| County      | ALBERTA                   |
| Province    | AB                        |
| Postal Code | T5S 0S3                   |

### Amenities

|           |                                     |
|-----------|-------------------------------------|
| Amenities | Deck, Walkout Basement, See Remarks |
| Parking   | Double Garage Attached              |

### Interior

|                   |   |
|-------------------|---|
| Interior Features | ensuite bathroom  |
| Appliances        | Dishwasher-Built-In, Dryer, Microwave Hood Fan, Refrigerator, Stove-Electric, Washer, Window Coverings, See Remarks |
| Heating           | Forced Air-1, Natural Gas   |
| Fireplace         | Yes   |
| Fireplaces        | Mantel  |
| Stories           | 2   |
| Has Basement      | Yes   |
| Basement          | Full, Unfinished  |

### Exterior

|                   |  |
|-------------------|--|
| Exterior          | Wood, Stone, Vinyl   |
| Exterior Features | Backs Onto Park/Trees, Golf Nearby, Landscaped, Playground Nearby, |

Public Transportation, Schools, Shopping Nearby, See Remarks

|              |                    |
|--------------|--------------------|
| Roof         | Asphalt Shingles   |
| Construction | Wood, Stone, Vinyl |
| Foundation   | Concrete Perimeter |

### Additional Information

|                |                  |
|----------------|------------------|
| Date Listed    | April 21st, 2025 |
| Days on Market | 9                |
| Zoning         | Zone 59          |

DATA IS DEEMED RELIABLE BUT IS NOT GUARANTEED ACCURATE BY THE REALTORS® ASSOCIATION OF EDMONTON. COPYRIGHT 2025 BY THE REALTORS® ASSOCIATION OF EDMONTON. ALL RIGHTS RESERVED. Trademarks are owned or controlled by the Canadian Real Estate Association (CREA) and identify real estate professionals who are members of CREA (REALTOR®, REALTORS®) and/or the quality of services they provide (MLS®, Multiple Listing Service®)

Listing information last updated on April 30th, 2025 at 2:32pm MDT