

\$1,375,000 - 6102 50 Avenue, Stettler Town

MLS® #E4431324

\$1,375,000

0 Bedroom, 0.00 Bathroom,
Retail on 0.00 Acres

None, Stettler Town, AB

Prime Location & Visibility: Positioned on a major arterial road (HWY 12) for maximum exposure to 7,280 vehicles. **Renovated Building and Gas Station:** Modern interior and exterior building upgrades with upgraded gas pumps.

Built in 1986

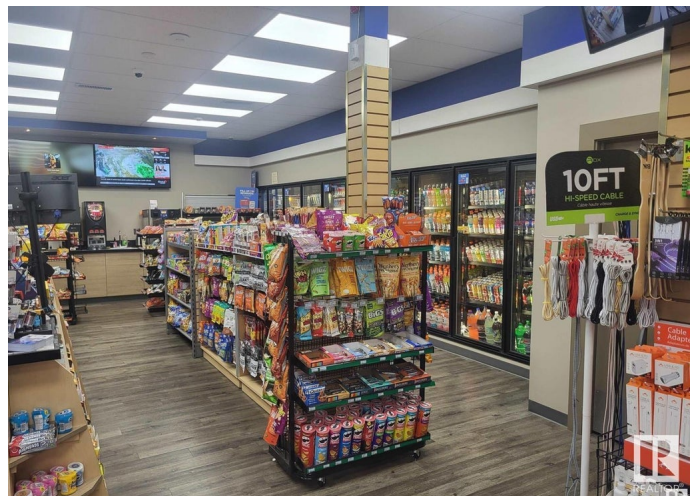
Essential Information

MLS® #	E4431324
Price	\$1,375,000
Bathrooms	0.00
Acres	0.00
Year Built	1986
Type	Retail
Status	Active

Community Information

Address	6102 50 Avenue
Area	Stettler Town
Subdivision	None
City	Stettler Town
County	ALBERTA
Province	AB
Postal Code	T0C 2L2

Exterior



Exterior	Mixed
Construction	Mixed

Additional Information

Date Listed	April 17th, 2025
Days on Market	13
Zoning	Zone 80

DATA IS DEEMED RELIABLE BUT IS NOT GUARANTEED ACCURATE BY THE REALTORS® ASSOCIATION OF EDMONTON. COPYRIGHT 2025 BY THE REALTORS® ASSOCIATION OF EDMONTON. ALL RIGHTS RESERVED. Trademarks are owned or controlled by the Canadian Real Estate Association (CREA) and identify real estate professionals who are members of CREA (REALTOR®, REALTORS®) and/or the quality of services they provide (MLS®, Multiple Listing Service®)

Listing information last updated on April 30th, 2025 at 9:32am MDT