

\$530,000 - 9019 89 Street, Edmonton

MLS® #E4430905

\$530,000

2 Bedroom, 1.00 Bathroom, 1,000 sqft
Single Family on 0.00 Acres

Bonnie Doon, Edmonton, AB

ATTENTION BUILDERS, INVESTORS & DEVELOPERS!! THIS CORNER LOT IS 36.6M X 17.2M (120.08 FT. X 56.43 FT) ZONED RF3 AND IDEAL FOR REDEVELOPMENT 4 PLEX PERHAPS? THIS PROPERTY IS CONSIDERED AS LOT VALUE ONLY AND WILL BE SOLD "AS IS WITH NO WARRANTIES OR GUARANTEES."

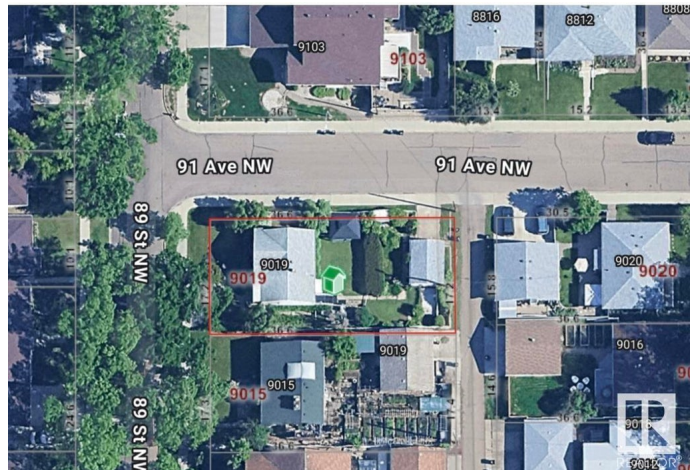
Built in 1949

Essential Information

MLS® #	E4430905
Price	\$530,000
Bedrooms	2
Bathrooms	1.00
Full Baths	1
Square Footage	1,000
Acres	0.00
Year Built	1949
Type	Single Family
Sub-Type	Detached Single Family
Style	Bungalow
Status	Active

Community Information

Address	9019 89 Street
Area	Edmonton



Subdivision	Bonnie Doon
City	Edmonton
County	ALBERTA
Province	AB
Postal Code	T6C 3K7

Amenities

Amenities	On Street Parking
Parking	Single Garage Detached

Interior

Appliances	See Remarks
Heating	Forced Air-1, Natural Gas
Stories	1
Has Basement	Yes
Basement	Full, Partially Finished

Exterior

Exterior	Wood, Vinyl
Exterior Features	Back Lane, Corner Lot, Flat Site, Public Transportation, Schools, Shopping Nearby
Roof	Asphalt Shingles
Construction	Wood, Vinyl
Foundation	Concrete Perimeter

Additional Information

Date Listed	April 15th, 2025
Days on Market	16
Zoning	Zone 18

DATA IS DEEMED RELIABLE BUT IS NOT GUARANTEED ACCURATE BY THE REALTORS® ASSOCIATION OF EDMONTON. COPYRIGHT 2025 BY THE REALTORS® ASSOCIATION OF EDMONTON. ALL RIGHTS RESERVED.Trademarks are owned or controlled by the Canadian Real Estate Association (CREA) and identify real estate professionals who are members of CREA (REALTOR®, REALTORS®) and/or the quality of services they provide (MLS®, Multiple Listing Service®)

Listing information last updated on May 1st, 2025 at 1:47am MDT