

\$3,300,000 - 6740 Cedar Way, Innisfail

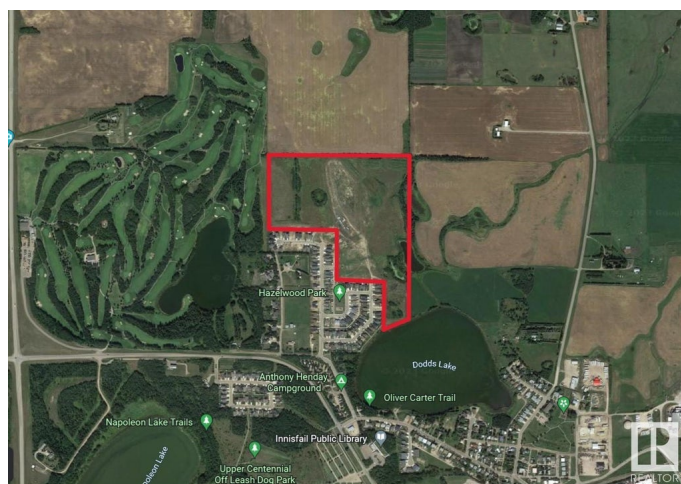
MLS® #E4430254

\$3,300,000

0 Bedroom, 0.00 Bathroom,
Land Commercial on 0.00 Acres

Dodds Lake, Innisfail, AB

Turn-key 55.1-acre Residential Development Parcel with 262 +/- residential single and multi-family lots ready to be built out. Hazelwood Estates is the Premier Community in Innisfail that is an integral part of Innisfail's North Area Structure Plan (NASP) that town council is focused on growing. Innisfail is an Energized Community, and this development allows you to start building immediately. This parcel features the new school site with Executive lots backing onto the Prestigious Innisfail Golf Club and Dodds Lake. Located just 20 minutes from Red Deer and 60 minutes to Calgary, Innisfail is a hot bed for extensive growth and poised to be a Big Part of Alberta's Expanding Future.



Essential Information

MLS® #	E4430254
Price	\$3,300,000
Bathrooms	0.00
Acres	0.00
Type	Land Commercial
Status	Active

Community Information

Address	6740 Cedar Way
Area	Innisfail

Subdivision	Dodds Lake
City	Innisfail
County	ALBERTA
Province	AB
Postal Code	T4G 0A5

Additional Information

Date Listed	April 10th, 2025
Days on Market	129
Zoning	Zone RUR6

DATA IS DEEMED RELIABLE BUT IS NOT GUARANTEED ACCURATE BY THE REALTORS® ASSOCIATION OF EDMONTON. COPYRIGHT 2025 BY THE REALTORS® ASSOCIATION OF EDMONTON. ALL RIGHTS RESERVED. Trademarks are owned or controlled by the Canadian Real Estate Association (CREA) and identify real estate professionals who are members of CREA (REALTOR®, REALTORS®) and/or the quality of services they provide (MLS®, Multiple Listing Service®)

Listing information last updated on August 17th, 2025 at 4:17pm MDT