

\$249,000 - 11222 84 Street, Edmonton

MLS® #E4430069

\$249,000

4 Bedroom, 1.00 Bathroom, 784 sqft
Single Family on 0.00 Acres

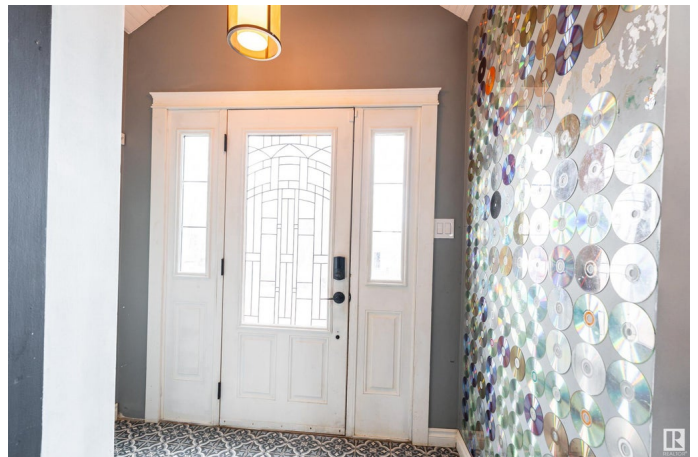
Parkdale (Edmonton), Edmonton, AB

ATTENTION FIRST TIME HOME BUYERS and INVESTORS, Charming 4 bed, 1 bath 783 sq. ft. bungalow in desirable Parkdale! This bright, open-concept home features a spacious living room that flows into a dining area and updated kitchen with stainless steel appliances and plenty of storage. Two generous bedrooms and a 4-piece bath complete the main level. The partly finished basement is ready for your creative touch with two bedrooms and a roughed in bathroom. Situated on a 33' x 120' lot zoned RM h23. This is a GREAT rental or live and re-development later property. Enjoy outdoor living in the fenced backyard with a deck—perfect for relaxing or entertaining. Located just minutes from downtown with easy access to the Southside via Gretzky Drive, 2 minute walk to Commonwealth Stadium and a 5-minute walk to the LRT. Ideal for first-time buyers, investors, or anyone seeking a centrally located home!

Built in 1952

Essential Information

MLS® #	E4430069
Price	\$249,000
Bedrooms	4
Bathrooms	1.00



Full Baths	1
Square Footage	784
Acres	0.00
Year Built	1952
Type	Single Family
Sub-Type	Detached Single Family
Style	Raised Bungalow
Status	Active

Community Information

Address	11222 84 Street
Area	Edmonton
Subdivision	Parkdale (Edmonton)
City	Edmonton
County	ALBERTA
Province	AB
Postal Code	T5B 3A9

Amenities

Amenities	Detectors Smoke, No Animal Home, No Smoking Home
Parking Spaces	2
Parking	Single Garage Detached

Interior

Appliances	Dishwasher-Built-In, Dryer, Oven-Microwave, Refrigerator, Stove-Electric, Washer
Heating	Forced Air-1, Natural Gas
Stories	1
Has Basement	Yes
Basement	Full, Partially Finished

Exterior

Exterior	Wood, Stucco
Exterior Features	Playground Nearby, Schools, Shopping Nearby, View Downtown
Roof	Asphalt Shingles
Construction	Wood, Stucco
Foundation	Concrete Perimeter

Additional Information

Date Listed April 10th, 2025

Days on Market 20

Zoning Zone 05

DATA IS DEEMED RELIABLE BUT IS NOT GUARANTEED ACCURATE BY THE REALTORS® ASSOCIATION OF EDMONTON. COPYRIGHT 2025 BY THE REALTORS® ASSOCIATION OF EDMONTON. ALL RIGHTS RESERVED. Trademarks are owned or controlled by the Canadian Real Estate Association (CREA) and identify real estate professionals who are members of CREA (REALTOR®, REALTORS®) and/or the quality of services they provide (MLS®, Multiple Listing Service®)

Listing information last updated on April 30th, 2025 at 8:17pm MDT