

\$377,777 - 68 133 Eastgate Way, St. Albert

MLS® #E4429965

\$377,777

3 Bedroom, 2.50 Bathroom, 1,392 sqft
Condo / Townhouse on 0.00 Acres

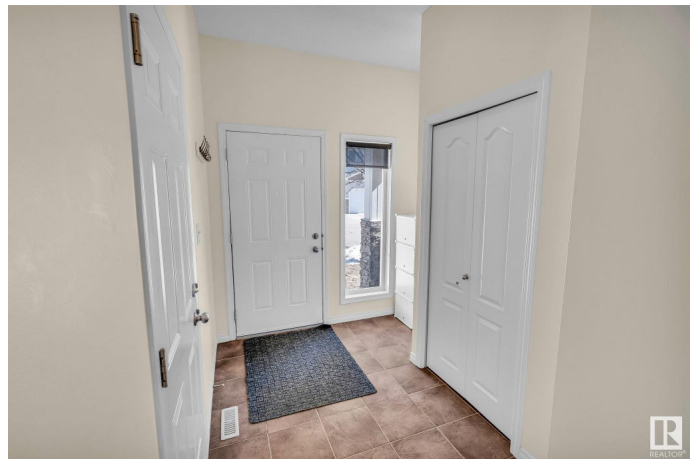
Erin Ridge, St. Albert, AB

Welcome to the wonderful Eastgate Pointe, located in the beautiful community of Erin Ridge in St. Albert. This 3 bedroom & 3 bathroom half duplex, offers over 1,800sqft of developed living space on 3 levels! The VERY BRIGHT MAIN FLOOR is complete with a welcoming entryway, 2 piece bath w/ window, spacious kitchen with ample pantry space, open concept dining and living area & a gas fireplace. The patio doors enter onto the WEST FACING BACKYARD. The second floor offers: master bedroom, with 4pc ensuite & walk-in closet, UPSTAIRS LAUNDRY, 2 more bedrooms & an additional 4pc bathroom! Finished basement has a huge family room & TONS of storage space. One of the storage areas has a rough in for a future bathroom if desired. The SINGLE ATTACHED GARAGE is INSULATED with 2 driveway parking stalls. With many walking trails nearby, just a few minutes away from the new Erin Ridge North Shopping Center, this gorgeous home is a must see!

Built in 2007

Essential Information

MLS® #	E4429965
Price	\$377,777
Bedrooms	3



Bathrooms	2.50
Full Baths	2
Half Baths	1
Square Footage	1,392
Acres	0.00
Year Built	2007
Type	Condo / Townhouse
Sub-Type	Half Duplex
Style	2 Storey
Status	Active

Community Information

Address	68 133 Eastgate Way
Area	St. Albert
Subdivision	Erin Ridge
City	St. Albert
County	ALBERTA
Province	AB
Postal Code	T8N 7M9

Amenities

Amenities	Deck, Detectors Smoke, No Animal Home, No Smoking Home, Parking-Visitor, Vinyl Windows
Parking	Insulated, Single Garage Attached

Interior

Interior Features	ensuite bathroom
Appliances	Dishwasher-Built-In, Garage Control, Garage Opener, Garburator, Hood Fan, Microwave Hood Fan, Refrigerator, Stacked Washer/Dryer, Stove-Electric, Vacuum System Attachments, Vacuum Systems, Window Coverings
Heating	Forced Air-1, Natural Gas
Fireplace	Yes
Fireplaces	Corner, Mantel
Stories	3
Has Basement	Yes
Basement	Full, Finished

Exterior

Exterior	Wood, Stone, Vinyl
Exterior Features	Fenced, Low Maintenance Landscape, Playground Nearby, Public Transportation, Schools, Shopping Nearby
Roof	Asphalt Shingles
Construction	Wood, Stone, Vinyl
Foundation	Concrete Perimeter

Additional Information

Date Listed	April 10th, 2025
Days on Market	20
Zoning	Zone 24
Condo Fee	\$108

DATA IS DEEMED RELIABLE BUT IS NOT GUARANTEED ACCURATE BY THE REALTORS® ASSOCIATION OF EDMONTON. COPYRIGHT 2025 BY THE REALTORS® ASSOCIATION OF EDMONTON. ALL RIGHTS RESERVED.Trademarks are owned or controlled by the Canadian Real Estate Association (CREA) and identify real estate professionals who are members of CREA (REALTOR®, REALTORS®) and/or the quality of services they provide (MLS®, Multiple Listing Service®)

Listing information last updated on April 30th, 2025 at 10:47am MDT