

# \$0 - 201 9 Chippewa Road, Sherwood Park

MLS® #E4423703

**\$0**

0 Bedroom, 0.00 Bathroom,  
Office on 0.00 Acres

Broadmoor Centre, Sherwood Park, AB

Top quality improvements in this modern second floor Executive office space in the Westana Professional Centre just off Broadmoor Blvd and Baseline Road in Sherwood Park. 6092 square feet of premium office space featuring and attractive and open reception, 14 offices of varying sizes, a large boardroom, closing/signing office, staff kitchenette and an extra large filing/storage area. Also has interior M/F washrooms in addition to the common area washroom just outside the entrance next to elevator. Truly beautiful space for those whose corporate image is important.

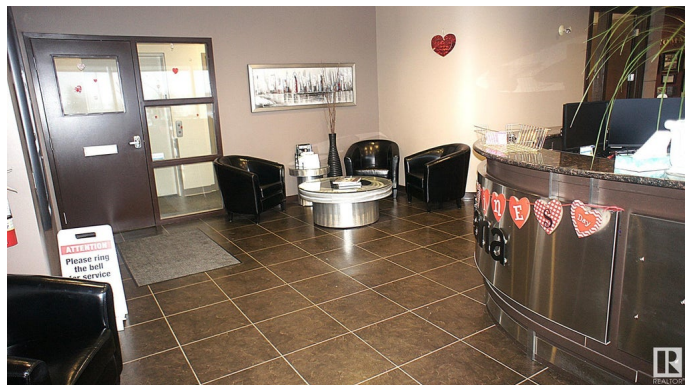
Built in 2007

## Essential Information

MLS® #	E4423703
Bathrooms	0.00
Acres	0.00
Year Built	2007
Type	Office
Status	Active

## Community Information

Address	201 9 Chippewa Road
Area	Sherwood Park
Subdivision	Broadmoor Centre



City	Sherwood Park
County	ALBERTA
Province	AB
Postal Code	T8A 6J7

### **Exterior**

Exterior	Concrete, Tilt-Up
Construction	Concrete, Tilt-Up

### **Additional Information**

Date Listed	March 3rd, 2025
Days on Market	105
Zoning	Zone 25

DATA IS DEEMED RELIABLE BUT IS NOT GUARANTEED ACCURATE BY THE REALTORS® ASSOCIATION OF EDMONTON. COPYRIGHT 2025 BY THE REALTORS® ASSOCIATION OF EDMONTON. ALL RIGHTS RESERVED. Trademarks are owned or controlled by the Canadian Real Estate Association (CREA) and identify real estate professionals who are members of CREA (REALTOR®, REALTORS®) and/or the quality of services they provide (MLS®, Multiple Listing Service®)

Listing information last updated on June 16th, 2025 at 10:32am MDT