

## \$17,900 - 5611 Railway Avenue, Boyle

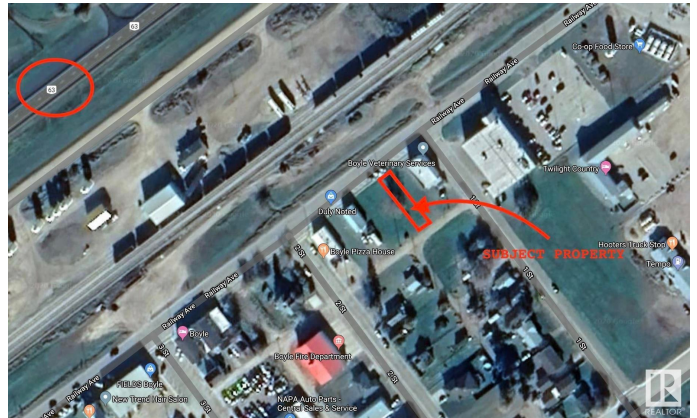
MLS® #E4422692

**\$17,900**

0 Bedroom, 0.00 Bathroom,  
Land Commercial on 0.00 Acres

Boyle, Boyle, AB

LOWEST PRICE FOR A COMMERCIAL LOT IN BOYLE! Don't miss out on this opportunity to build your dream business with exposure to HWY 63 and Railway ave in Boyle. Half way between Edmonton and Fort McMurray you could tap into the massive amount of traffic that runs on the highway daily! Exposure is key and some well established businesses are near by including the Co-op grocery store, the Boyle Vet, and the Pizza House! Municipal services are available to this lot.



### Essential Information

MLS® #	E4422692
Price	\$17,900
Bathrooms	0.00
Acres	0.00
Type	Land Commercial
Status	Active

### Community Information

Address	5611 Railway Avenue
Area	Boyle
Subdivision	Boyle
City	Boyle
County	ALBERTA
Province	AB
Postal Code	T0A 0M0

**Additional Information**

Date Listed                February 22nd, 2025  
Days on Market        177  
Zoning                    Zone 60

DATA IS DEEMED RELIABLE BUT IS NOT GUARANTEED ACCURATE BY THE REALTORS® ASSOCIATION OF EDMONTON. COPYRIGHT 2025 BY THE REALTORS® ASSOCIATION OF EDMONTON. ALL RIGHTS RESERVED.Trademarks are owned or controlled by the Canadian Real Estate Association (CREA) and identify real estate professionals who are members of CREA (REALTOR®, REALTORS®) and/or the quality of services they provide (MLS®, Multiple Listing Service®)  
Listing information last updated on August 18th, 2025 at 2:02am MDT