

\$0 - 119 226 Mcleod Avenue, Spruce Grove

MLS® #E4415095

\$0

0 Bedroom, 0.00 Bathroom,
Retail on 0.00 Acres

City Centre, Spruce Grove, AB

Street level retail opportunity! 1,468 sq. ft.
open plan with 2 offices on new McLeod
Avenue street plan. Good parking, Ready for
quick move in!

Built in 1980

Essential Information

MLS® #	E4415095
Bathrooms	0.00
Acres	0.00
Year Built	1980
Type	Retail
Status	Active

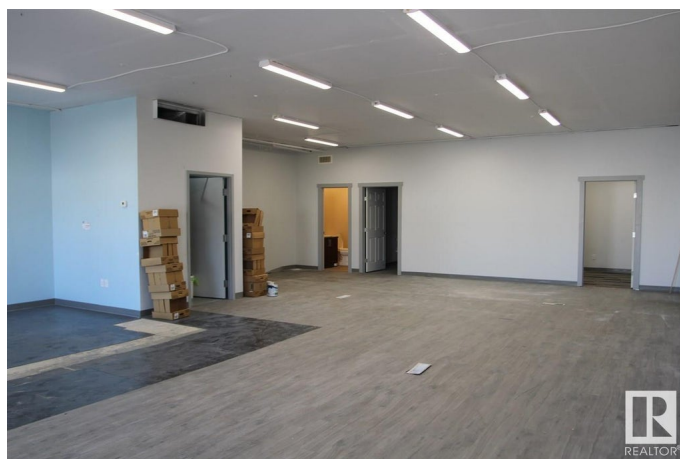
Community Information

Address	119 226 Mcleod Avenue
Area	Spruce Grove
Subdivision	City Centre
City	Spruce Grove
County	ALBERTA
Province	AB
Postal Code	T7X 3X2

Exterior

Exterior	Wood Frame
Construction	Wood Frame

Additional Information



Date Listed December 2nd, 2024

Days on Market 196

Zoning Zone 91

DATA IS DEEMED RELIABLE BUT IS NOT GUARANTEED ACCURATE BY THE REALTORS® ASSOCIATION OF EDMONTON. COPYRIGHT 2025 BY THE REALTORS® ASSOCIATION OF EDMONTON. ALL RIGHTS RESERVED. Trademarks are owned or controlled by the Canadian Real Estate Association (CREA) and identify real estate professionals who are members of CREA (REALTOR®, REALTORS®) and/or the quality of services they provide (MLS®, Multiple Listing Service®)

Listing information last updated on June 16th, 2025 at 1:18pm MDT