

\$159,900 - 4713 20 Avenue, Drayton Valley

MLS® #E4385222

\$159,900

0 Bedroom, 0.00 Bathroom,
Land Commercial on 0.00 Acres

Drayton Valley, Drayton Valley, AB

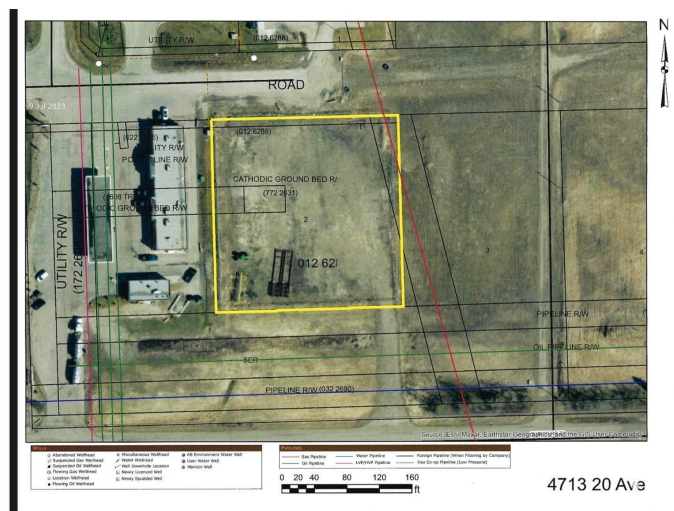
1.26 acre lot with town services located just off Hwy 22. Situated next to the south entrance of Drayton Valley, this property provides high exposure with tremendous traffic flow daily. With direct access to Highway 22 and in a subdivision with National franchise chains & multiple hotel chains close by, this up and coming location is certainly expanding. The lot is serviced with water/sewer inside the property as well as power (metered) also inside the property. The lot is completely graveled with a geotextile base. With chain link fencing, a north and south gate access, and high visibility, this property is ready for your next venture to begin. A prime Commercial location that is Zoned Commercial -Business(C-BUS).

Essential Information

MLS® #	E4385222
Price	\$159,900
Bathrooms	0.00
Acres	0.00
Type	Land Commercial
Status	Active

Community Information

Address	4713 20 Avenue
Area	Drayton Valley



Subdivision	Drayton Valley
City	Drayton Valley
County	ALBERTA
Province	AB
Postal Code	T7A 0C5

Additional Information

Date Listed	May 2nd, 2024
Days on Market	365
Zoning	Zone 90

DATA IS DEEMED RELIABLE BUT IS NOT GUARANTEED ACCURATE BY THE REALTORS® ASSOCIATION OF EDMONTON. COPYRIGHT 2025 BY THE REALTORS® ASSOCIATION OF EDMONTON. ALL RIGHTS RESERVED.Trademarks are owned or controlled by the Canadian Real Estate Association (CREA) and identify real estate professionals who are members of CREA (REALTOR®, REALTORS®) and/or the quality of services they provide (MLS®, Multiple Listing Service®)

Listing information last updated on May 2nd, 2025 at 12:47am MDT