

## \$0 - 10355 82 Av Nw, Edmonton

MLS® #E4052342

**\$0**

Bedroom, Bathroom, 2,138 sqft

Office on 0.00 Acres

Strathcona Junction, Edmonton, AB

Historic building in the heart of Whyte Avenue with upgraded facade, fully renovated common areas and upgraded HVAC. Sizes available include: 2,215 Sq. Ft. on the 2nd floor, 2138 sq. ft. on the 3rd floor, 1,130 Sq. Ft. on the 3rd floor and 2,873 Sq. Ft. on the lower level. Available immediately. Operating costs are \$14.79 inclusive of property tax, management, common area maintenance and utilities. Ideal for specialty retail, office, and creative spaces. Current Tenant incentive is one month of free net rent per year of the term signed!

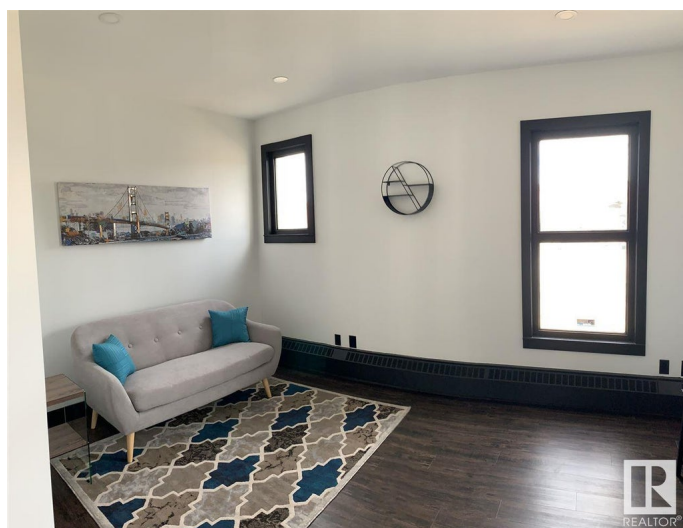
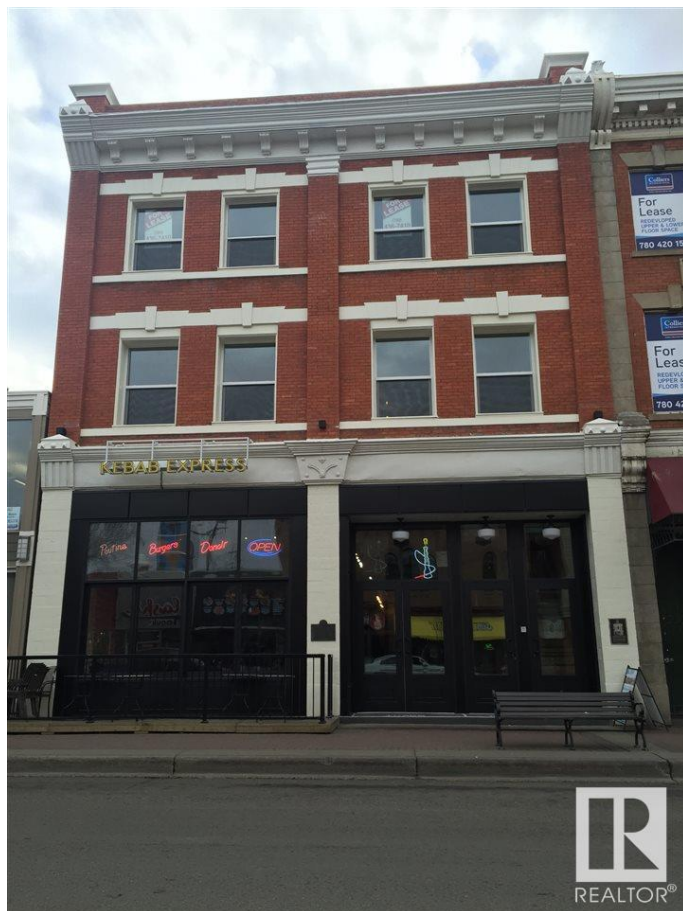
Built in 1960

### Essential Information

MLS® #	E4052342
Square Footage	2,138
Acres	0.00
Year Built	1960
Type	Office

### Community Information

Address	10355 82 Av Nw
Area	Edmonton
Subdivision	Strathcona Junction
City	Edmonton
Province	AB



Postal Code            T6E 1Z9

**Exterior**

Construction            Brick/Masonry

**Additional Information**

Date Listed            February 24th, 2017

Zoning                  DC1

DATA IS DEEMED RELIABLE BUT IS NOT GUARANTEED ACCURATE BY THE REALTORS® ASSOCIATION OF EDMONTON. COPYRIGHT 2024 BY THE REALTORS® ASSOCIATION OF EDMONTON. ALL RIGHTS RESERVED.Trademarks are owned or controlled by the Canadian Real Estate Association (CREA) and identify real estate professionals who are members of CREA (REALTOR®, REALTORS®) and/or the quality of services they provide (MLS®, Multiple Listing Service®)

Listing information last updated on May 3rd, 2024 at 2:02pm MDT